



THE
RUG
COMPANY
H A N D M A D E







THERUGCOMPANY.COM

THE
RUG
COMPANY
H A N D M A D E

Contents

-



6

-
Making Rugs by Hand



12

-
Materials and Techniques



18

-
Design Your Own



26

-
Trade and Contract



28

-
Our Services



32

-
Visit us

Roomsets and Inspiration



36

-
Abstract



58

-
Neutral Zone



74

-
Geometric



92

-
Contemporary Classics



106

-
Art Deco



116

-
Colour Pop



130

-
Modern



142

-
Inspired by Nature



164

-
Great Plains



176

-
The Textures Collection



182

-
The Complementary
Colour Collection



188

-
The Endurance Collection

Design Library



196

-
Contemporary Rugs



240

-
Handloomed Rugs



250

-
The Endurance Collection



256

-
Accessories



268

-
Vintage and Traditional

Our Designers



272

-
What is your design mantra?

Practical Information



278

-
Size and Fitting



280

-
Care and Cleaning



282

-
Contact



About us

-

Creation is a collaborative process. At The Rug Company our handknotted rugs are the result of the shared passion and commitment of a diverse network of people. One that ranges from the skilled weavers in Nepalese mills, to the dedicated teams laying the finished rugs in homes around the globe.

We share a collective pride that we produce and source the finest quality rugs in the world. For over 20 years we have been driven by curiosity and a cultivated collector's eye, travelling far and wide to discover rare and exceptional pieces. Crafting each handknotted rug takes four months, but they last generations because we use the same time-honoured techniques employed by artisans for hundreds of years.

A synergy of nature and craft, the refined textures of our rugs are elevated by the raw materials we choose.

We use wool from high on the Tibetan plateau, wool so rich in natural lanolin that it is oily to touch. Our spinners, weavers and dyers handle it with reverence to retain its extraordinary properties.

Design is at the heart of everything we do, from our experienced in-house studio to external talents with whom we collaborate; visionary designers who have blazed a trail in their respective fields of fashion, design or architecture.

We understand that selecting a rug is a process too - a personal journey - that takes time, but is well worth the wait.

Making Rugs by Hand

-

Every one of our rugs is entirely handmade, meticulously woven, loomed or knotted by weavers applying ancient techniques passed down through many generations.

It is a remarkable craft composed of several stages that require great dexterity and care, from the gentle spinning of the wool to the intricate trimming of the pile of the finished rug.

Few investments for your home are representative of such rich craft heritage and attention to detail, one that is enhanced by our contemporary design expertise. Every rug is traditionally made but designed for modern living. Created using the very best natural materials prepared by hand, to preserve and ensure durability, with a little care, each rug should last a lifetime.







01

**Journey of a handknotted
Nepalese rug**

01 Carding

The process of teasing and straightening the jumbled fibres of raw wool so that it can be spun into yarn.

02 Spinning

The carded wool or other fibres are spun by hand into yarn.



02

03 Dye Master

The most important person in the dyeing process, the dye master is responsible for creating recipes for every colour.

04 and 05 Yarn Colours

The yarns are dyed and then left to dry in the sun on the roofs of Kathmandu.



03



04



05



06

06 Balling

Once the dyed yarns have dried they are collected and wound into balls ready to be taken to the loom.

07 Graph

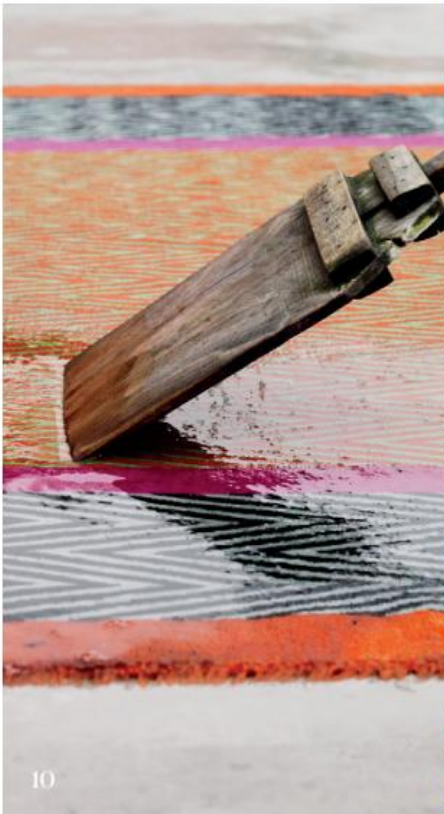
A hand-drawn plan of the design is created, specifying the colour and position of every knot. This sits behind the loom for the weavers to follow.

08 Weaving

Using the Tibetan technique, the yarn is knotted around the vertical warp threads and a metal rod. The higher the knot count, the finer the rug.

09 Rod

Once the row is completed, the rod is hammered tight against the row below. The weaver then cuts the yarns along the rod, creating the pile.

**10 Washing**

All the rugs are washed on both sides; water is squeezed through the pile with wooden paddles called 'pharwa' and left to dry naturally in the sun.

11 Shearing

After washing, the rug is laid flat and the pile is cut neatly to the required height by hand.

**12 Clipping**

A technique that is part of the finishing process. The boundaries between different colours or pattern elements are defined and differences in pile height are smoothed.

13 Binding

The sides of the rug are wrapped in yarn to match the design.



Sustainability and Good Practice

Our craftspeople are at the heart of everything we do. We are proud to support the craftsmanship of Nepal and are pleased to champion a beautiful heritage which is in danger of extinction. Nepal's long and proud tradition of Tibetan weaving enables us to create rugs of unparalleled quality and beauty. We are the biggest importer of rugs from Nepal, making a vital contribution to the Nepalese economy and providing sustainable employment to a large number of people.

The welfare of our weavers is of paramount importance to us. An experienced consultant assists us to ensure that we are continually meeting and exceeding local and international industry standards relating to all environmental and ethical aspects of the rug-making process. In addition, we take further responsibility for the health and wellbeing of those whose hard work creates our rugs by providing mobile health

clinics that visit our production centres on a regular basis.

GoodWeave

We are pleased to be a key licensee of GoodWeave, a non-profit organisation dedicated to ensuring no child or forced labour is used in any of its registered productions. The GoodWeave label is the best assurance that no child labour was employed in the making of that rug, and a percentage of the cost of labelled rugs goes to support grassroots social programmes in India and Nepal. In order to be certified by GoodWeave, our weavers sign a legally binding contract to produce rugs without child labour, and to allow unannounced inspections of their workshops by GoodWeave agents.

For further information on GoodWeave, please visit: www.goodweave.org



Meet our craftspeople

01 Bharat

Living with his wife and three children in Kathmandu, Bharat started his washing centre in 1990. "It takes between one to six hours to wash a rug and around seven days to dry."

02 Urmila

"I find happiness when talking with friends and singing whilst weaving. My favourite colour is red, because it looks good!"

03 Usha

"I have been working at The Rug Company since 2009, my husband washes the rugs here also. I like to ball the silk yarn because it is soft, easy and fast to ball."

04 Krishna

"I love drawing and painting, I learned to paint the graph four years ago. It takes two days to one week to paint a large graph. My favourite design is Oriental Birds, it looks so lovely."



Materials and Techniques

-

At The Rug Company our commitment to the art of making rugs by hand is unwavering, and we have sought both to honour and reinvigorate this great tradition. There are many ways to make a rug by hand and many materials to choose from.

Different yarns display different properties of strength, softness and lustre.

Some are smooth and cool to the touch while others are sumptuously soft and warm. Beyond the more obvious charms of wool, silk and cotton we have explored the merits of such diverse fibres as bamboo, banana leaf, mohair, merino and alpaca. We have remained faithful to the natural materials, carefully preserving their inherent properties.

Once a yarn is chosen there are myriad ways in which it can be knotted and woven, twisted and looped around warp and weft to produce a handmade rug. These differing techniques produce a range of textural surfaces, from fine and flat to chunky and shaggy. Whilst the precise detail of knotting techniques is the stuff of academia, here follows a brief introduction to the basics.



Materials

-

Each of our designs is entirely handcrafted using traditional techniques and the finest materials. We believe there is no other way to make a high-quality rug.



01 Wool

Prized for its softness, warmth and natural strength, sheep's wool has been used in myriad ways for thousands of years. Its unique natural properties mean that it is water repellent and flame retardant. Our Tibetan wool is collected from the fleeces of sheep living on the Himalayan plateau at high altitudes of up to 17,000 feet. Their wool is unusually strong and springy and is renowned for being exceptionally rich in lanolin, a natural stain barrier. Once collected, the wool is washed and hand-spun into soft yarns. The rich texture and long unbroken fibres mean it provides excellent durability and a wonderful texture underfoot. We believe it is the very best wool in the world for making rugs.

02 Silk

No other fibre rivals silk for decadent softness and luxurious shine. Silk has delighted the senses since it was first brought from China thousands of years ago. The spectacular lustre comes from the prism-like structure of the surface of each fibre, and is unique to silk. As well as reflecting light, this lustre also amplifies colours to a jewel-like intensity. Silk is tremendously strong, and in very old antique carpets it will often outlast wool, though it is considered rather more technical to clean. The finest silk is still thought to be that from China, and we use this to give the ultimate shine and softness. For a more natural feel we use hand-spun Indian silk which gives a more 'slubby' and uneven finish.



05 Bamboo Silk

The fibres of the noble bamboo plant are very long and strong. With special treatment they can be spun into a yarn that is lustrous like silk. Bamboo yarn is uneven in colour and the result is a rustic finish that exhibits interesting fluctuations in tone.



04 Mohair

Mohair or Angora wool is the yarn spun from the fleece of the Angora goat. Mohair has a beautiful lustre that adds a richness and intensity to colours and is generally woven into plain rugs where the tactile quality of the fibre comes into its own.



05 Merino

The Merino sheep, whose rams have long spiralling horns, originate from 12th Century Spain. They grow the most opulent and soft fleece, that is famed for its fineness and delightful touch.



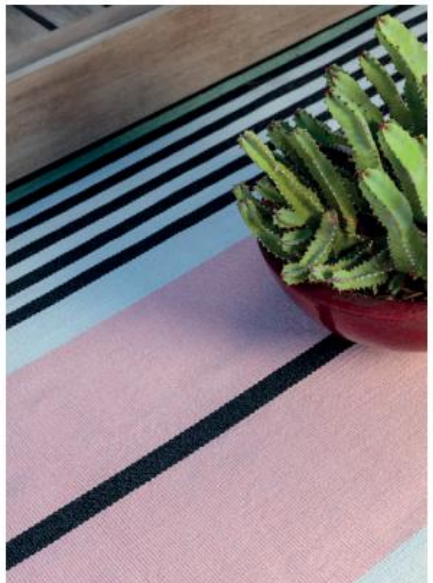
06 Linen

One of the oldest textiles in the world, linen is made from natural flax fibres which are extracted from the stem of the flax plant. Smooth and lustrous to the eye and silky in texture, linen has been renowned for centuries for its versatility and durability.



07 Alpaca

Sumptuously soft and luxurious, our alpaca rugs are made from the finest fleeces of the alpaca, a smaller relative of the llama, originally found in Latin America. Alpaca is thick and delightfully fluffy, making for a wonderful texture underfoot.



08 Perennials* yarn

Soft to the touch but robust and resilient, our Perennials® rugs are handwoven from solution dyed acrylic which is highly durable and designed to withstand any environment.

Qualities and Techniques

Handknotted

These rugs are composed of many thousands of individual knots, with the yarn tightly knotted by hand around the warp and weft of the rug. The size of the knot determines the quality of the rug, with the smallest knots allowing the finest detail of pattern. The result is a rug of extraordinary quality and durability.



Handloomed

Our handloomed rugs are made in Nepal by the same skilled weavers as our handknotted rugs, using the same fine materials. These rugs are handmade on a loom with the use of the shuttle.

Like handknotted rugs, a rod can be used, creating many textural possibilities. This technique lends itself well to plain rugs, small scale patterns and interesting textures achieved in single tones of colour.



**01 Cut pile**

Cut pile refers to the process of shearing the yarn loops, leaving the pile upright and the ends of the yarn exposed, giving a soft, luxurious touch to any rug.

**02 Loop pile**

A type of pile where the knots around the rod are left uncut forming loops, which achieves an interesting texture.

**03 Flat loop pile**

Yarns are knotted directly onto the warp and left uncut, creating a firmer texture for when a thinner, more tactile finish is desired.

**04 Raised pile**

The pile can be intricately hand trimmed to different heights to add a three-dimensional quality to the design.

**05 Carving**

Patterned elements of a design can be painstakingly hand carved to give designs an added dimension. Patterns can be carved or raised depending on the desired effect.

**06 Aubusson**

This tapestry technique produces the finest handmade rugs and hangings. The wool and silk threads are woven around the cotton warps and tightly packed to create intricate patterns.

**07 Needlepoint**

A traditional embroidery craft, where delicate patterns are created by stitching wool or silk through a natural canvas. A range of scales is possible, from simple to exquisitely fine.

**08 Crewelwork**

An age-old type of hand embroidery using the chain stitch technique, which has been loved for centuries for its ability to form organic shapes and sinuous designs.

**09 Flatweave**

Our flatweaves are handwoven by skilled artisans using Perennials® yarn. The fibre is intertwined so there are no threads protruding to create a pile.



Design Your Own

-

Not all rooms are created equal, certain spaces call for something completely different - a more tailor-made approach.

Our extensive catalogue of rugs provides a rich tapestry of inspiration for customers wanting to flex their creative muscle. We can adapt any existing design to suit your particular requirements. There are many different possibilities - colour, shape, size of existing rugs can be altered and patterns up or downscaled - which is why our team will guide you through the process.

For those who want to create something entirely new and one of a kind, whether you have something specific in mind or need a little guidance, we have the expertise and experience to help you translate your vision.

Weaving a rug to order typically takes four to five months, though complex commissions may take longer. This period of anticipation, however, seems brief when compared with the lifetime of enjoyment a custom-designed piece can give.



Custom Design

We understand that our designs will not always work perfectly in your space and encourage you to make the most of our Custom Service to alter them until they are exactly what you need.

Every aspect of a rug can be changed. Choose from thousands of shades of colour, or we can match any sample you provide. Designs can be refashioned into ovals, squares, circles and runners. We can even weave rugs to be installed as wall-to-wall carpeting or a stair runner.

Our specialist design team will be on hand at every step of the way to create a rug entirely suited to your needs. Throughout the process your dedicated specialist can show you renderings of the design in situ and can also prepare small samples so that you can check colours.

We have also developed a digital Custom Rug Designer on our website which allows you to experiment yourself and customise our designs. Please get in touch with your local showroom or visit our website to find out more.



01



02



03

Custom Shape

01 Karsansui runner
Karsansui by Michael Reeves was adapted from the original to create an elegant stair runner.

02 Circular Thistle Gold
Thistle Gold by Vivienne Westwood was refashioned into a circle in custom colours to emphasise the shape of the room.

03 Monarch Fire runner
Monarch Fire by Alexander McQueen was commissioned as a dramatic statement runner for an entrance hallway.



Custom Colour

01, 02 and 05
Channels Copper
 Adapted from the original copper colourway (03), the silk motif was transformed into an inky indigo (01) and a soothing ivory (02).



01

Custom Colour

01 and 02 Monarch Smoke

The magnified butterfly motif from our Monarch design by Alexander McQueen (02) is commissioned to perfectly match the colour scheme of an Asian-inspired interior (01).

03 and 04 Bridge

The colours of the motif and the background were inverted in the Bridge design (03) to create this bold statement piece for a bedroom (04).



02



03



04



Custom Colour

05 and 06 Stingray Red

Adapted from the original with a scarlet motif (06), our Stingray design by Alexandra Champalimaud gets a dramatic makeover with a shimmering navy silk motif (05).

07 and 08 Gramercy

Gramercy by Sandra Nunnerley was adapted from the original neutral palette (08) to create a darker, more dramatic design (07). The background was changed to a dark brown with a lighter wool motif.

09 Custom Rug Designer

Alter our designs in shape, size, colour and material to suit your specifications.



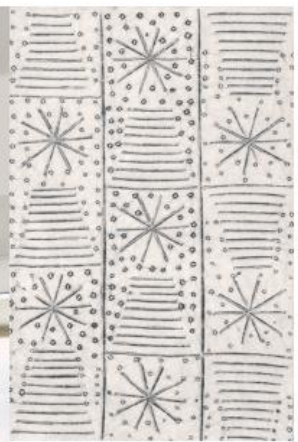
Bespoke Design

-

Let your imagination run wild and we will use our professional expertise to transform your design into a beautiful bespoke rug.

Whatever your concept, we will explore the many possibilities of colour, technique and material to help you develop and realise your vision.

A bespoke rug takes time to weave, but the result is the ultimate luxury - your very own masterpiece to treasure forever.



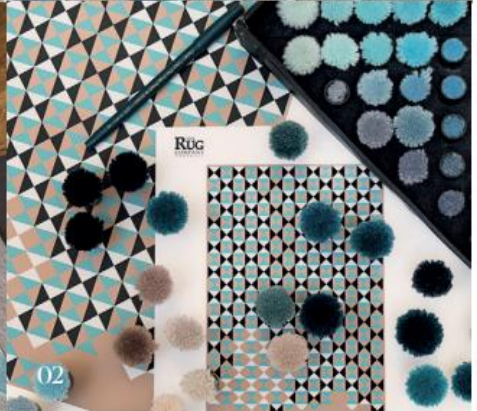
Mid-century masterpiece
A bespoke design based on a mid-century textile, was brought to life for a contemporary space in London.



04



05



02



01

Story of a Bespoke Project

01 Original painting

The artist Trine Kielland commissioned us to create a bespoke rug from one of her paintings, 'Blue Triangle.'

02 Translating to wool

Our team matched the colours and experimented with textures and pile height to bring the original paintwork to life.

05 and 04 The final design

The artwork was sent to our weavers in Nepal, who skilfully brought the three-dimensional design to life on the loom, to produce the final rug.



Trade and Contract

-

For over 20 years, we have been working with professional designers from all over the world to create unique and exciting designs for residential and commercial projects.

Chosen for their quality, durability and original design, our rugs can be found in many hotels, restaurants, yachts, offices and retail spaces around the world. As well as looking elegant, our traditional weaving methods ensure that the chosen rugs will have the durability to withstand the tread of a public space and are easy to look after.

Our team of design experts are committed to guiding you through every stage of the creative process; from initial design talks and sampling of colours and materials, to providing renderings of the design in situ and the final installation.

A range of qualities ensure any design requirements and project specifications can be met, delivering total flexibility and accuracy to suit your project budget and timeline. As a trade professional, we also offer you exclusive benefits, please contact us or go online to find out more details.



01 Alexander McQueen, Paris
 Military Brocade by Alexander McQueen in the Paris boutique designed by David Collins Studio.

02 Soho House, Berlin
 A series of richly-hued custom pink mohairs adorn the members club.

03 The London Hotel, LA
 A custom Squiggle developed for a penthouse suite designed by Vivienne Westwood.

04 Rittenhouse Hotel, Philadelphia
 A geometric design was commissioned by Alexandra Champalimaud as a bespoke wall-to-wall rug for the lobby.

05 Plaza Hotel, New York
 The landmark hotel featuring Silhouette by Jaime Hayon.



Our Services

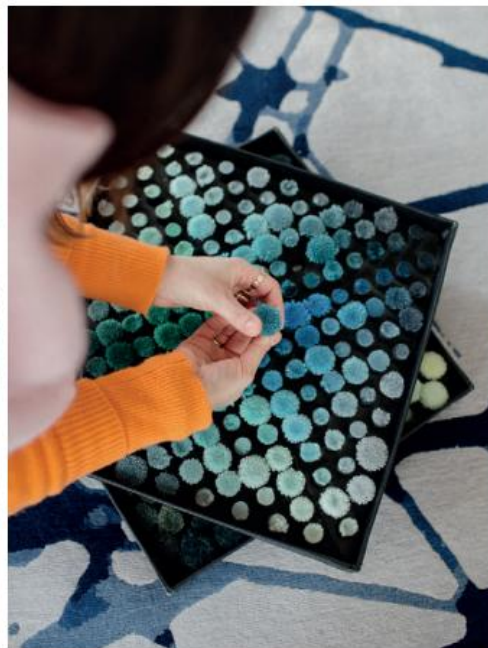
-

Not just the tactile sensation beneath your feet, a rug can anchor a room whatever the style of your interiors. That is why we understand the importance of finding the perfect design for you and recommend that you take advantage of our services to find the right fit for your space.

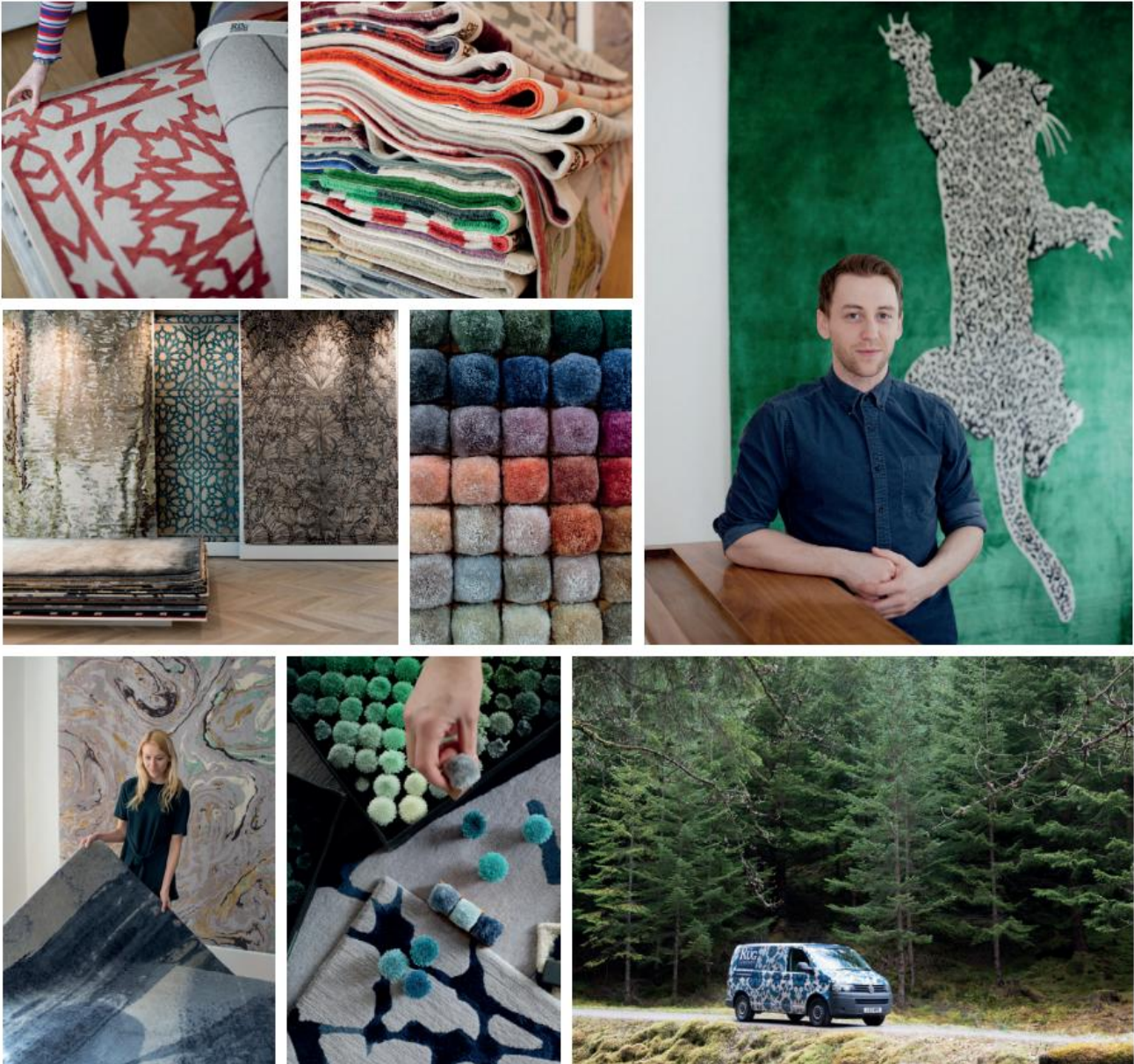
Perfectionists ourselves, our team have an expert knowledge of our collections and can offer you style advice on how best to use and place the rugs. We have many designs in stock and will allocate you a dedicated consultant to guide you through every step of the process; from initial design talks to final installation. Finding your perfect rug could not be easier.

We recommend that you experience our rugs at home, and in changing light conditions through the day, before you reach a decision. Drawing upon 20 years of expertise, our dedicated Home Consultation and Approval team will advise you, enabling you to check the size, colour and design in situ to ensure it is absolutely right for the intended space.

Whilst we have a broad range of stock, we understand that sometimes a space requires something more unique and encourage you to use our Custom and Bespoke Service. The possibilities are infinite; we can adjust the shape, size and colours to match your vision until you are happy with the final design.







Our Showrooms

See our handmade rugs up close in our welcoming and inspiring showrooms, where you will receive a warm welcome and the best level of service.

Approval Service

When buying a rug, we recommend you try our rugs in situ, with our Home Approval Service. Checking the size, colour and design in situ is the only way to make sure it's absolutely right for the space.



Delivery

Where possible, we will deliver and install your rugs ourselves, offering advice on how to care for them.



Design Experts
Our team of design experts are always on hand to help guide you through the design process. With a wealth of experience, they can advise on the best rug for your space or guide you through a custom and bespoke project.



Samples
In our showrooms you will find an abundance of samples demonstrating our materials, colours and weaving techniques, to help you create a custom rug. We are also happy to make a small sample of your custom design to check the colours before ordering the full-size rug.

Stock
We stock a large range of rugs in a number of sizes. Our collections comprise an array of designer rugs, in-house designs and unique vintage pieces, which are available directly from our showrooms and online.

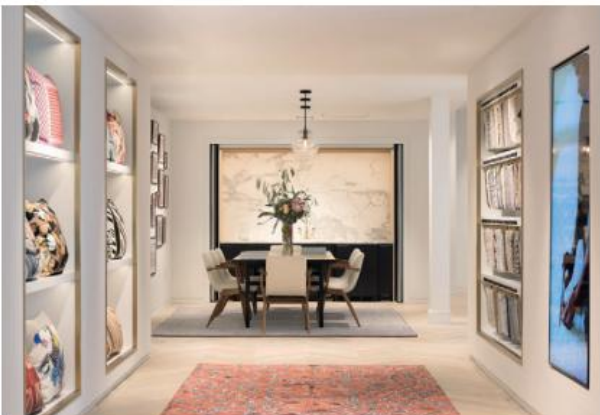
Visit us



Visit us at our digital flagship [THERUGCOMPANY.COM](https://www.THERUGCOMPANY.COM) to shop our latest collections, to learn about the inspiration behind our designs and to sign up for our newsletter.

Alternatively, visit one of our international showrooms which are built not only to showcase our rugs but also to inspire and welcome visitors. A visit to one of The Rug Company's beautiful showrooms offers the opportunity to see and feel our luxurious handmade rugs as well as meet our team of design experts who will assist you. As well as standalone showrooms, we have developed excellent concession and shop-in-shop concepts.





Locations

UK

-
- London - Holland Park
- London - Chelsea
- London - Harrods
- London - King's Cross

North America

-
- New York - Uptown
- New York - Soho
- Los Angeles
- Miami
- Chicago
- Dallas
- San Francisco
- Boston
- Atlanta
- Toronto
- Vancouver
- Mexico City

Europe

-
- Germany - Hamburg
- Germany - Munich
- Spain - Barcelona
- Spain - Madrid
- Brussels
- Moscow

Rest Of World

-
- Cape Town
- Beirut
- Dubai
- Kuwait



Roomsets and Inspiration

-

We offer a vast spectrum of rug designs from richly hued block colours to exuberant patterns, and in myriad styles; abstract, Art Deco, floral and geometric to name a few. Whether your style is bold and contemporary or muted and traditional, we have the perfect rug for every room.

ABS TR ACT

Organic and irregular forms



Previous page:

Lola

David Rockwell

Handknotted Tibetan wool

Channels Copper

Kelly Wearstler

Handknotted Tibetan wool and silk











Previous spread:

Staccato Steel

Kelly Wearstler

Handknotted Tibetan wool and silk

Staccato

Kelly Wearstler

Handknotted Tibetan wool and silk

Wake

Kelly Wearstler

Handknotted Tibetan wool and silk





Parallax

Kelly Wearstler

Handknotted Tibetan wool and bamboo silk

Calacatta

The Rug Company

Handknotted Tibetan wool and bamboo silk





Spotlight Silver

David Rockwell

Handknotted Tibetan wool and silk

Smoke

Adam Hunter

Handknotted Tibetan wool and silk





Brushstrokes

Elic Saab

Handknotted Tibetan wool and silk





Tidal

David Rockwell

Handknotted bamboo silk

Farrah Grey

Nicole Fuller

Handknotted Tibetan wool and silk





Marble

Rodarte

Handknotted Tibetan wool and silk

Tidal Moonlight

David Rockwell

Handknotted bamboo silk







Misty

David Rockwell

Handknotted bamboo silk

Bridge

The Rug Company

Handknotted Tibetan wool



Farrah Ruby

Nicole Fuller

Handknotted Tibetan wool and silk

Shadow

Alexandra Champalimaud

Handknotted Tibetan wool



NEUTRAL ZONE

Harmonious and understated shades



Madison

Sandra Nunnerley

Handknotted Tibetan wool and silk



Illume

Kelly Wearstler

Handknotted Tibetan wool and bamboo silk









Previous spread:

Lace Leaves

Elie Saab

Handknotted Tibetan wool and silk

Post

Kelly Wearstler

Handknotted bamboo silk

Next spread:

Diamond Maze Grey

The Rug Company

Handknotted Tibetan wool



EDWARD
BARBER
VISUAL
ATHLETICS
CLUB







Pallas

The Rug Company
Handknotted Tibetan wool

Pale Swirl

Paul Smith
Handknotted Tibetan wool and silk



Kuba

The Rug Company

Handknotted Tibetan wool

Taos

Katrin Cargill

Handknotted Tibetan wool





Reflections Silver

Allegra Hicks

Handknotted Tibetan wool and silk

Tracery

Kelly Wearstler

Handknotted Tibetan wool and silk



GEO METRIC

Bold patterns inspired by geometry





Previous page:

Calypso

Suzanne Sharp

Handknotted Tibetan wool and silk

Key Shadow

Suzanne Sharp

Handknotted Tibetan wool

Bonavita

Suzanne Sharp

Handknotted Tibetan wool







Key Slate

Suzanne Sharp

Handknotted Tibetan wool

Parisio

Suzanne Sharp

Handknotted Tibetan wool

Diamond Maze Navy
The Rug Company
Handknotted Tibetan wool





Square Chains Teal

The Rug Company
Handknotted Tibetan wool

Fold

The Rug Company
Handknotted Tibetan wool





Nazar

The Rug Company
Handknotted bamboo silk

Quilt Indigo

Katrin Cargill
Handknotted Tibetan wool



Highland
Vivienne Westwood
Handknotted Tibetan wool





Element

The Rug Company
Handknotted Tibetan wool

Regalia

Vivienne Westwood
Handknotted Tibetan wool and silk





Mazarin

The Rug Company

Handknotted Tibetan wool

Deltille

Trine Kielland

Handknotted Tibetan wool



CONTEMPORARY CLASSICS

Timeless transitionals

Gramercy
Sandra Nunnerley
Handknotted Tibetan wool and silk



A dark, cylindrical ceramic vase or container.

A small, dark, spherical lamp with a curved neck.

PICASSO SCULPTURE

JAZZ

A wide-brimmed hat with a light-colored, textured band.

A collection of wooden objects, including a long, curved wooden piece and a green object, possibly a sculpture or tool.





A black ceramic teapot with a long, thin spout and a circular handle, resting on the console table.

A clear glass vase containing a bouquet of white hydrangea flowers.

A stack of books on the console table. Visible titles include 'THE TWELVE CAESARS', 'THE ROMAN REVOLUTION', and 'LAXDELA SAGA'.

A square coffee table with a thick, green marble top and a brass frame, positioned in the foreground.

A large, grey, patterned rug with a complex, swirling, organic design, covering the floor.



Quad

The Rug Company
Handknotted Tibetan wool

Palermo

Suzanne Sharp
Handknotted Tibetan wool and silk

Previous spread:

Filigree

Christopher Kane

Handknotted Tibetan wool and silk









Previous spread:

Madison

Sandra Nunnerley

Handknotted Tibetan wool and silk

Catella

Emily Todhunter

Handknotted Tibetan wool and silk

Romy

Suzanne Sharp

Handknotted Tibetan wool and silk



Mamounia Sky
Martyn Lawrence Bullard
Handknotted Tibetan wool and silk





Military Brocade Ivory

Alexander McQueen

Handknotted Tibetan wool and silk

Cobalt

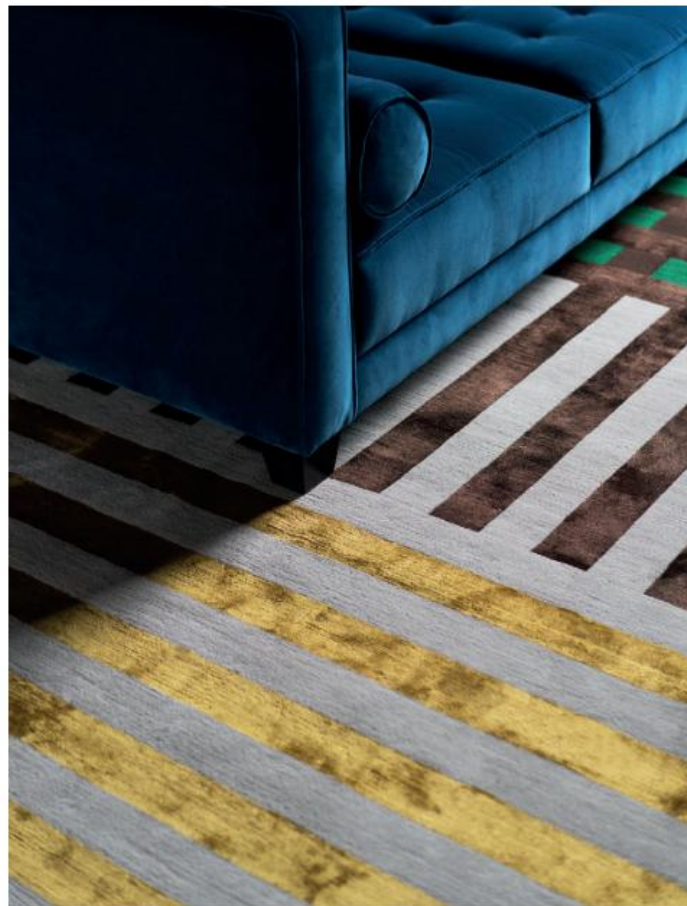
Rodarte

Handknotted Tibetan wool and silk



ART DECO

Elegant lines from decorative times



Grid Construct

Christopher Kane

Handknotted Tibetan wool and silk





Wave Construct

Christopher Kane

Handknotted Tibetan wool and silk





Albemarle

Paul Smith

Handknotted Tibetan wool and silk



Deco Diamond Light

Tim Gosling

Handknotted Tibetan wool and silk



Deco Spiral

Tim Gosling

Handknotted Tibetan wool and silk



Platinum

David Rockwell

Handknotted Tibetan wool and silk





Empire Runner

Tim Gosling

Handknotted Tibetan wool and silk

Empire

Tim Gosling

Handknotted Tibetan wool and silk

COLOUR POP

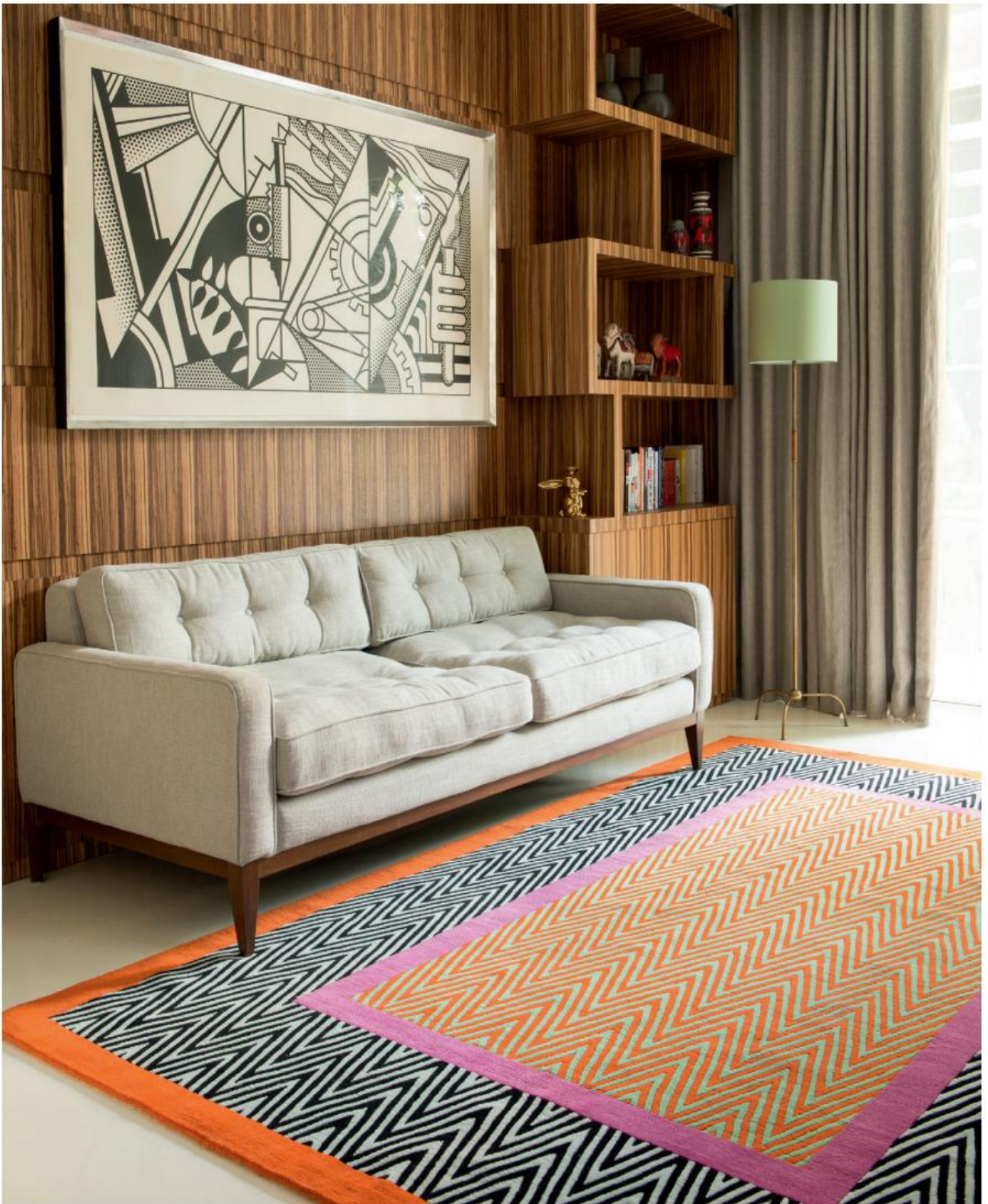
Bright and vibrant designs

Overlay Runner
Paul Smith
Handknotted Tibetan wool









Previous spread:

Festival

Paul Smith

Handknotted Tibetan wool

Herringbone

Jonathan Saunders

Handknotted Tibetan wool

Harrington

Jonathan Saunders

Handknotted Tibetan wool





Prism Blue and Prism Grey cushions

Paul Smith

Handwoven wool needlepoint

Pill Bright

The Rug Company

Handknotted Tibetan wool





Bamboo Trellis Blue

Neisha Crosland

Handknotted Tibetan wool and silk

Carnival

Paul Smith

Handknotted Tibetan wool





Refraction Light

Paul Smith

Handknotted Tibetan wool

Refraction Bright

Paul Smith

Handknotted Tibetan wool







Swirl

Paul Smith

Handknotted Tibetan wool

Zap

Fiona Curran

Handknotted Tibetan wool

MODERN

Clean and fresh compositions



Carnival Pale

Paul Smith

Handknotted Tibetan wool

Split Light

Paul Smith

Handknotted Tibetan wool









Previous spread:

Split Bright

Paul Smith

Handknotted Tibetan wool

Flaunt

Kelly Wearstler

Handknotted Tibetan wool and silk

Mainland Dark

Sebastian Herkner

Handknotted Tibetan wool and silk











Previous spread:

Carnival Pale

Paul Smith

Handknotted Tibetan wool

Paint Stripe

Paul Smith

Handknotted Tibetan wool

Rai

Jaime Gili

Handknotted Tibetan wool



Terrazzo

The Rug Company

Handknotted Tibetan wool

Mainland Light

Sebastian Herkner

Handknotted Tibetan wool and silk



INSPIRED BY NATURE

Flora and fauna





Previous page:

Chiaroscuro
Alexander McQueen
Handwoven wool Aubusson

Palms
Allegra Hicks
Handknotted Tibetan wool

Thistle Gold
Vivienne Westwood
Handknotted Tibetan wool and silk









Previous spread:

In Bloom

Elic Saab

Handknotted Tibetan wool and silk

Nacre

The Rug Company

Handknotted Tibetan wool and linen

Botanical Anatomy Grey

Christopher Kane

Handknotted Tibetan wool and silk





Dahlia

Alexandra Champalimaud

Handknotted Tibetan wool and silk

Magnolia Ice wool and silk

Vivienne Westwood

Handknotted Tibetan wool and silk





Botanical Anatomy Nude

Christopher Kane

Handknotted Tibetan wool and silk

Oriental Birds

Paul Smith

Handknotted Tibetan wool and silk







Thistle Pewter

Vivienne Westwood

Handknotted Tibetan wool and silk

Monarch Smoke

Alexander McQueen

Handknotted silk



Pony

Alexander McQueen
Handknotted Tibetan wool

Monarch Fire

Alexander McQueen
Handknotted silk



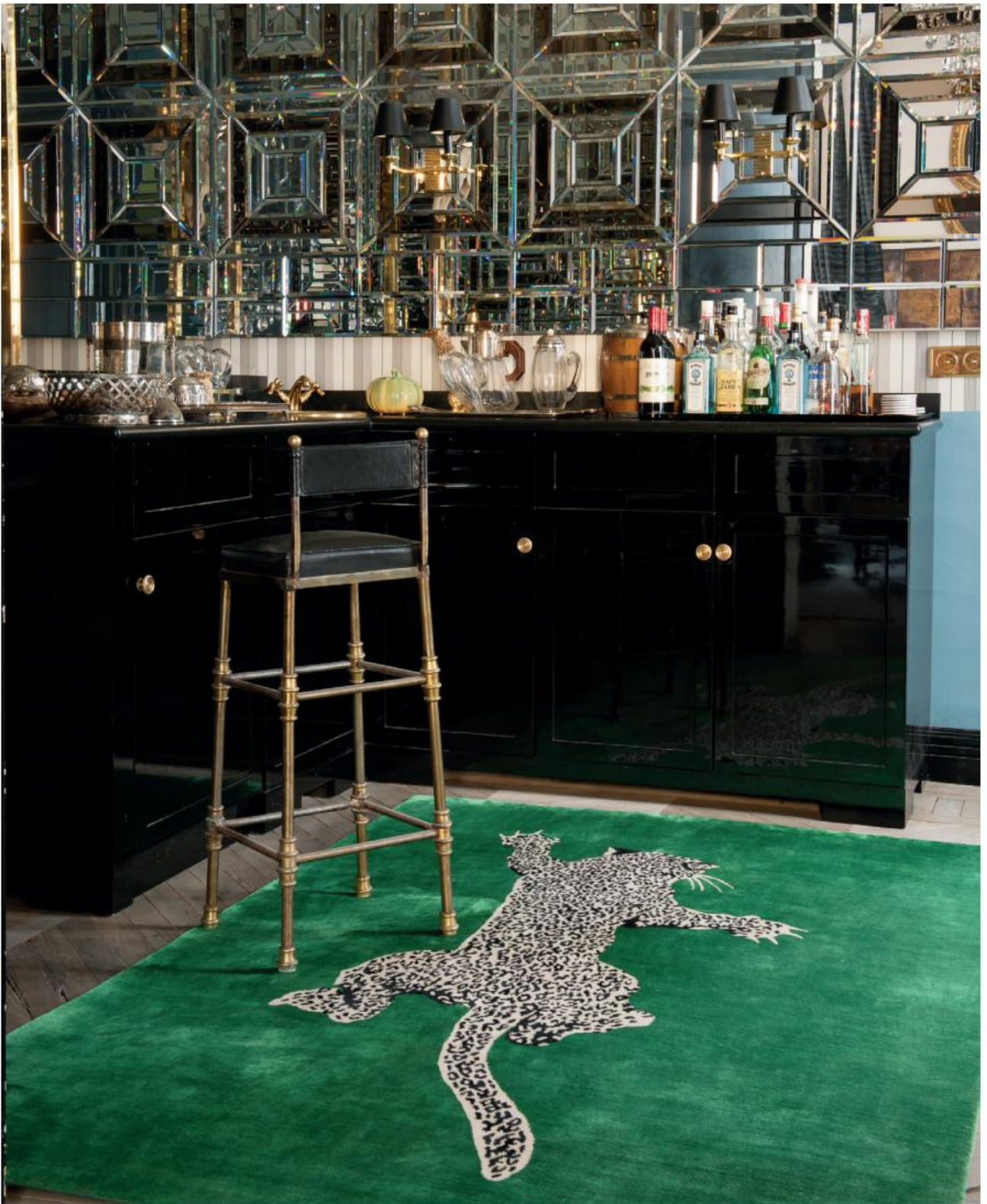
Hummingbird Ivory

Alexander McQueen

Handwoven pashmina and silk Aubusson with metallic thread







Climbing Leopard

Diane von Furstenberg

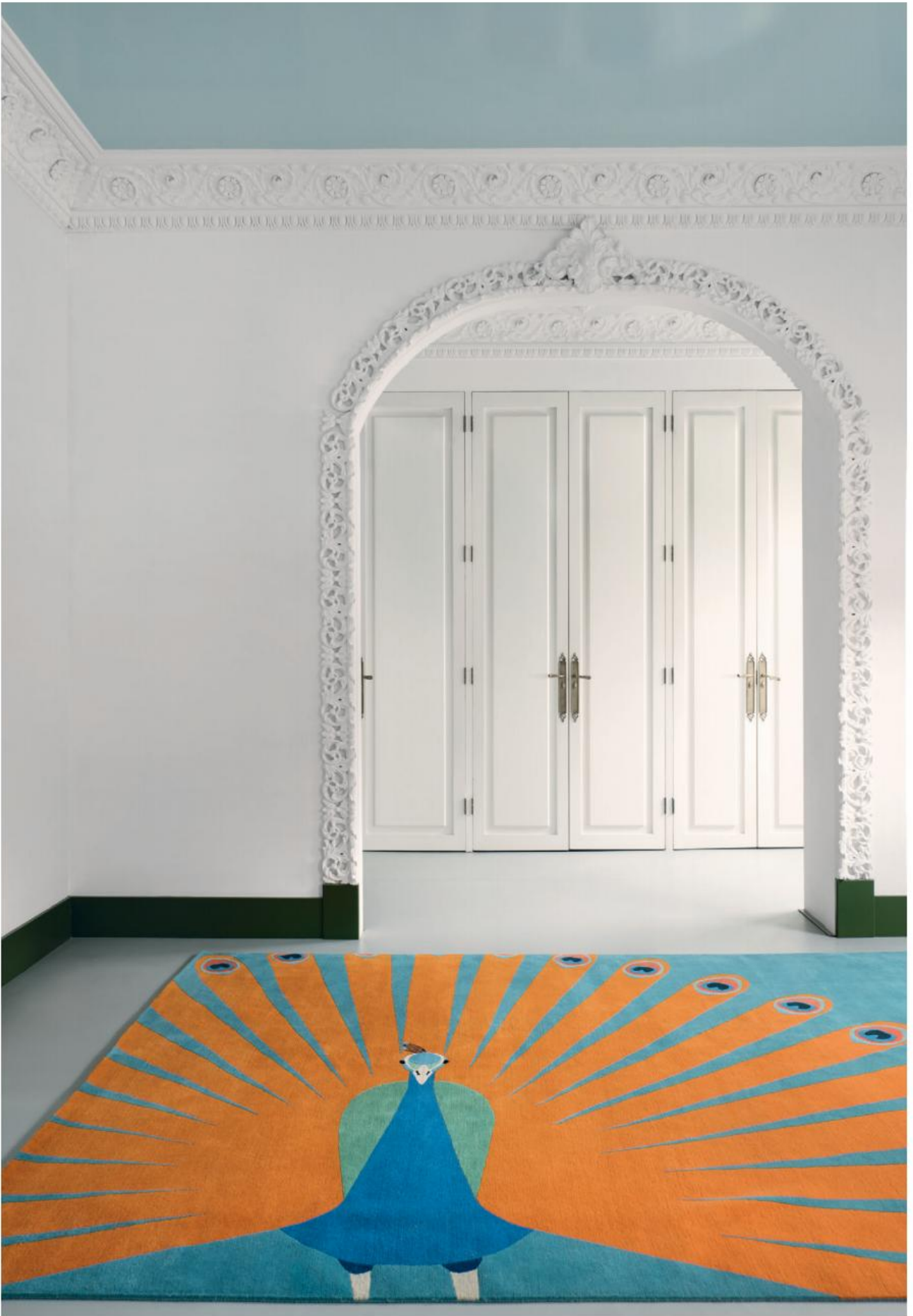
Handknotted silk

Python Glory

Diane von Furstenberg

Handknotted Tibetan wool







Peacock

Edward Barber and Jay Osgerby
Handknotted Tibetan wool

Tiger

Edward Barber and Jay Osgerby
Handknotted Tibetan wool

GREAT PLAINS



Subtle textures in solid colours



Previous page (left):

Cable Knit White

Thom Browne

Handknotted Tibetan wool

Previous page (right):

Triangles White

Suzanne Sharp

Handknotted Tibetan wool

Aarambha

The Rug Company

Handknotted bamboo silk

Capitone

Jaime Hayon

Handknotted Tibetan wool

Opposite page:

Star Silk

Helen Amy Murray

Handknotted silk





Peony

Helen Amy Murray

Handknotted Tibetan wool

Stupa Silver

Suzanne Sharp

Handknotted Tibetan wool and silk







Desert Silver

The Rug Company

Handknotted Tibetan wool and silk

Plain Silk

The Rug Company

Handknotted silk

Alpaca

The Rug Company

Natural alpaca hide



Opposite page:

Mohair Natural

The Rug Company

Handknotted mohair







Cable Knit Grey

Thom Browne

Handknotted Tibetan wool

Mohair Slate

The Rug Company

Handknotted mohair wool

Deep Pile Merino White

The Rug Company

Handknotted merino wool

Bamboo Silk Bronze

The Rug Company

Handknotted bamboo silk

Bamboo Silk Silver

The Rug Company

Handknotted bamboo silk



Opposite page:

Bamboo Silk Graphite

The Rug Company

Handknotted bamboo silk





THE TEXTURES COLLECTION

-

Inspired by the small-scale detailing of Seville's architecture, our collection of 10 handloomed designs combines textural, geometric forms with the highest quality raw materials.



Alcazar

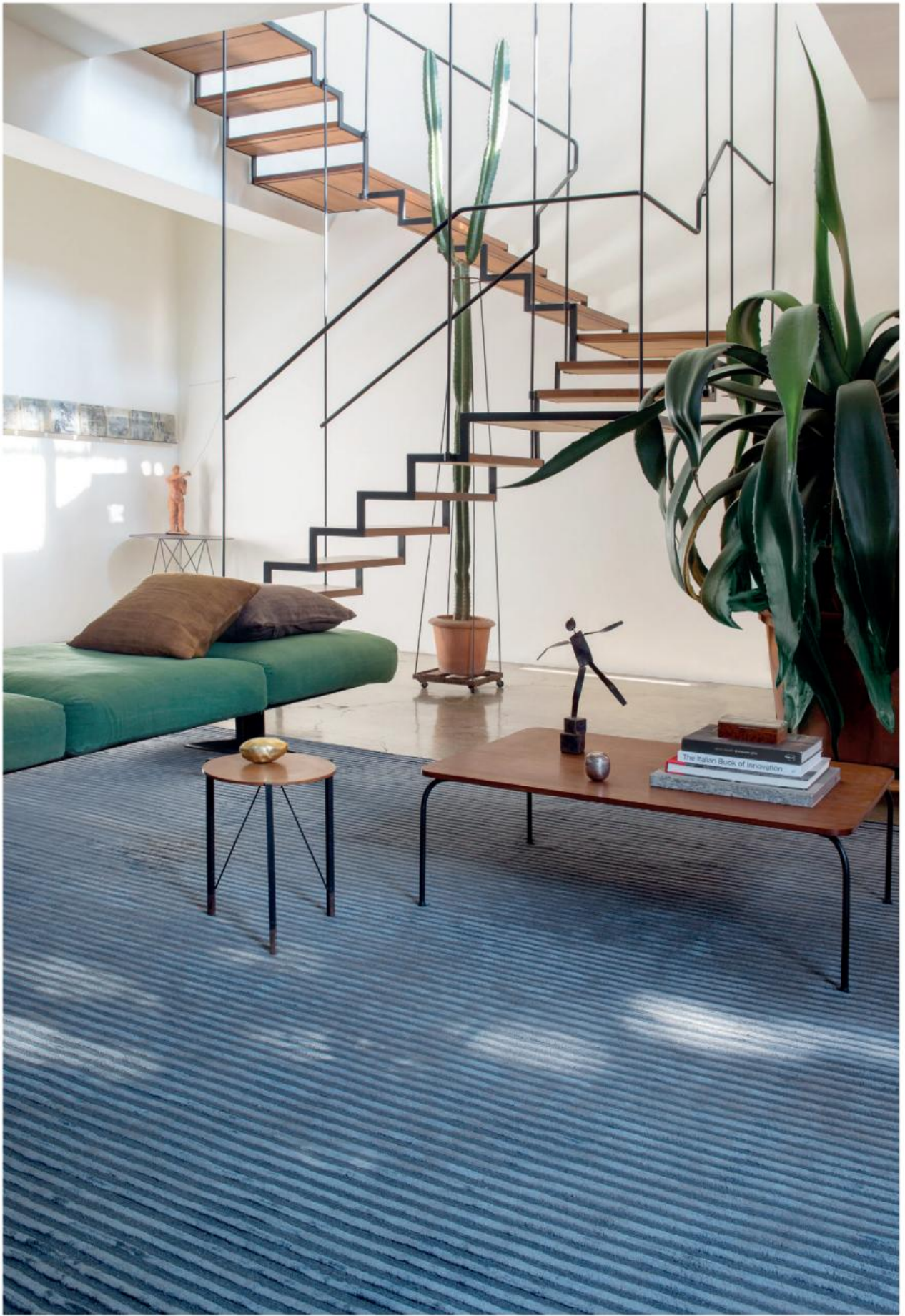
The Rug Company

Handloomed linen

Lineage

The Rug Company

Handloomed Tibetan wool and silk





Carmona
The Rug Company
Handloomed silk

Cloister
The Rug Company
Handloomed Tibetan wool and silk



Rake
The Rug Company
Handloomed Tibetan wool





Circuit

The Rug Company
Handloomed Tibetan wool

Medina

The Rug Company
Handloomed silk



THE COMPLEMENTARY COLOUR COLLECTION

-

Our range of Farrow & Ball handloomed rugs is available in 3 textures and 12 beautiful colourways, with each one perfectly complementing the Farrow & Ball palette.





Melrose Yellow Plain Wool

Farrow & Ball

Handloomed Tibetan wool

Portland Pink Silk Border

Farrow & Ball

Handloomed Tibetan wool and silk





Holland Stone Silk Border

Farrow & Ball

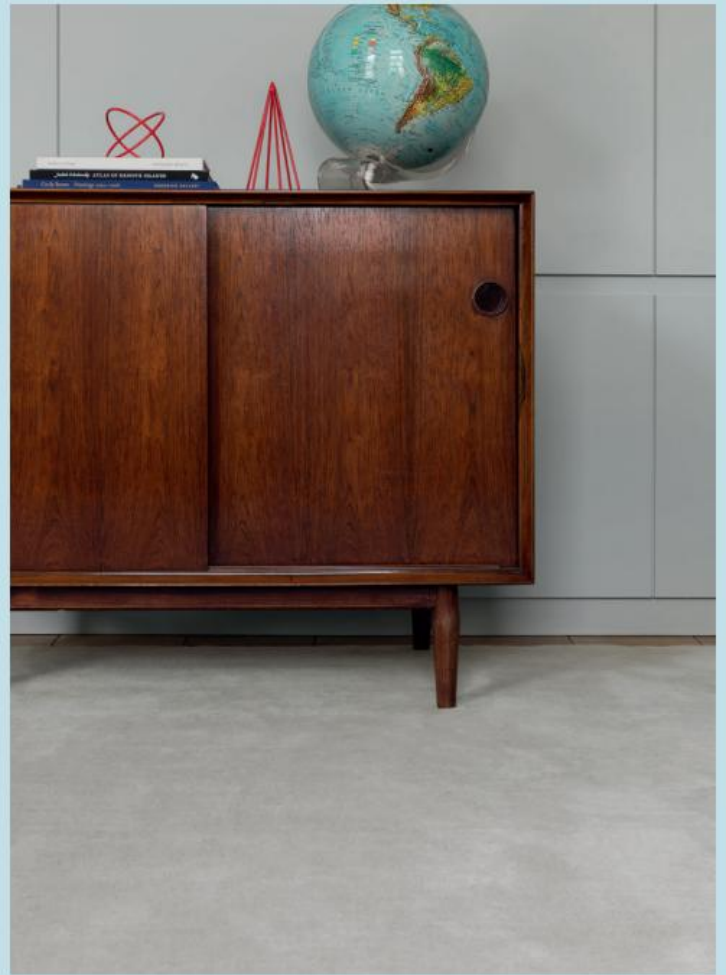
Handloomed Tibetan wool and silk

Wooster Cut and Loop Stripe

Farrow & Ball

Handloomed Tibetan wool





Opposite page:

Lots Blue Plain Wool

Farrow & Ball

Handloomed Tibetan wool

Keepers Red Cut and Loop Stripe

Farrow & Ball

Handloomed Tibetan wool

Wizlet Plain Wool

Farrow & Ball

Handloomed Tibetan wool

THE ENDURANCE COLLECTION

-

Our collection of performance rugs, made in collaboration with Perennials[®], are highly durable and designed to withstand any environment. Inspired by desert modernism and the architecture of Palm Springs, the designs are soft to the touch but robust and resilient.







Previous spread:

Marina

The Rug Company
Handwoven Perennials® yarn

Neutra

The Rug Company
Handwoven Perennials® yarn

Mirage

The Rug Company
Handwoven Perennials® yarn



Culver Terracotta
The Rug Company
Handwoven Perennials® yarn





Pacific

The Rug Company
Handwoven Perennials® yarn

Sands

The Rug Company
Handwoven Perennials® yarn

Culver Mint

The Rug Company
Handwoven Perennials® yarn



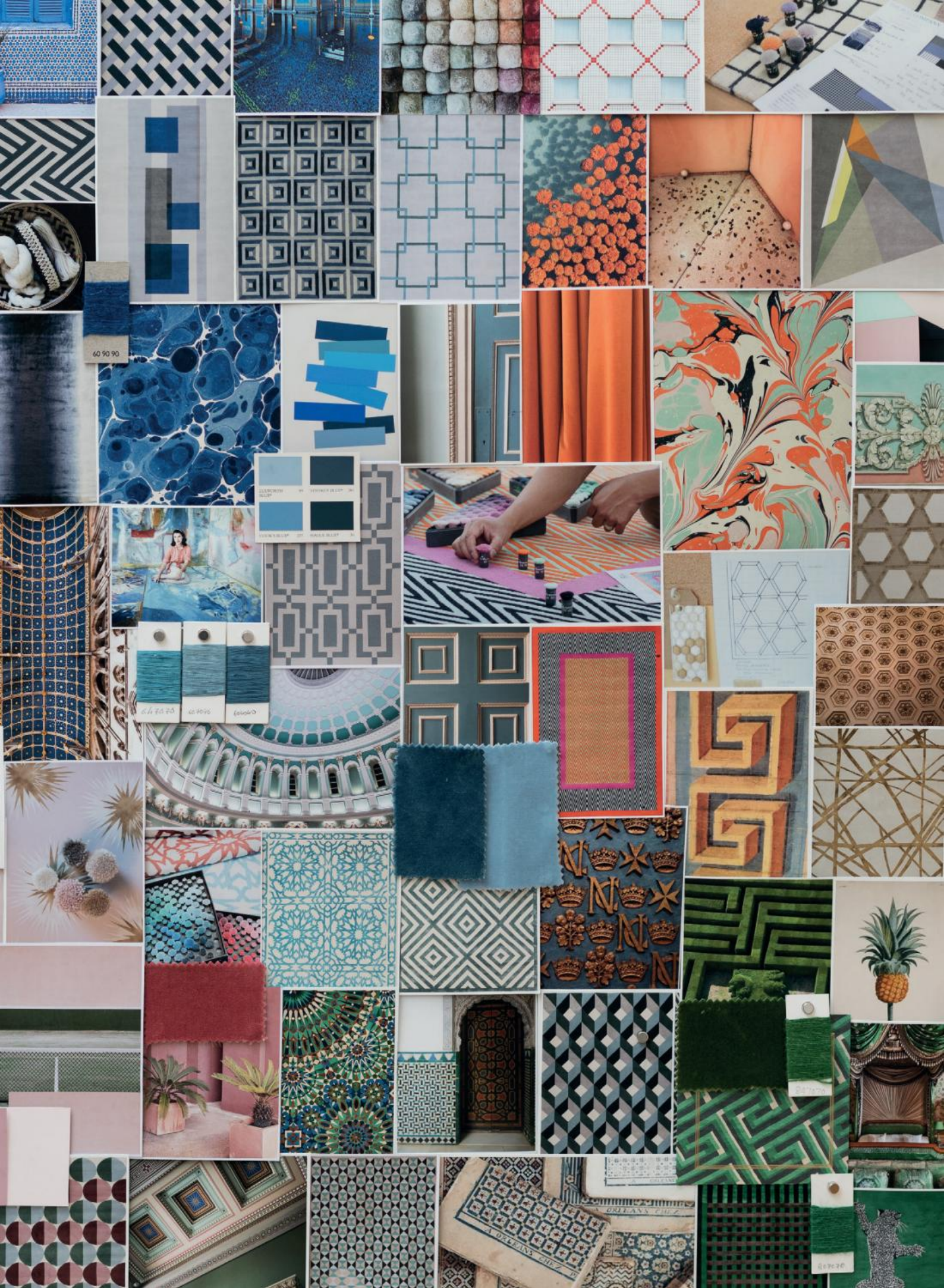




Design Library

—

Our latest collections comprise an exciting mix of beautifully crafted rugs. We have collaborated with talented designers to continually expand our diverse and original collection, as well as creating our own in-house designs.





Contemporary Rugs

—

Fusing modern creativity with traditional craftsmanship, discover your favourite design from our library of contemporary rugs.



Smoke

Adam Hunter

Wool and silk. Price band 11



Smoke Sunset

Adam Hunter

Wool and silk. Price band 11



Monarch Smoke

Alexander McQueen

Silk. Price band 15



Monarch Fire

Alexander McQueen

Silk. Price band 15



Hummingbird

Alexander McQueen

Pashmina and silk Aubusson. Price band 16



Hummingbird Ivory

Alexander McQueen

Pashmina and silk Aubusson. Price band 16



Chiaroscuro

Alexander McQueen

Wool Aubusson. Price band 16



Military Brocade Ivory

Alexander McQueen

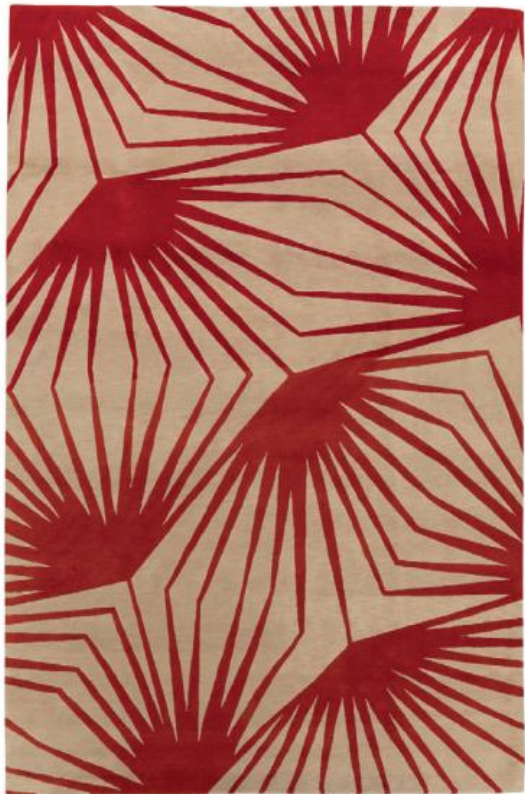
Wool and silk. Price band 15



Pony
Alexander McQueen
Wool. Price band 9



Shadow
Alexandra Champalimaud
Wool. Price band 7



Stingray Red
Alexandra Champalimaud
Wool. Price band 7



Stingray Neutral
Alexandra Champalimaud
Wool. Price band 7



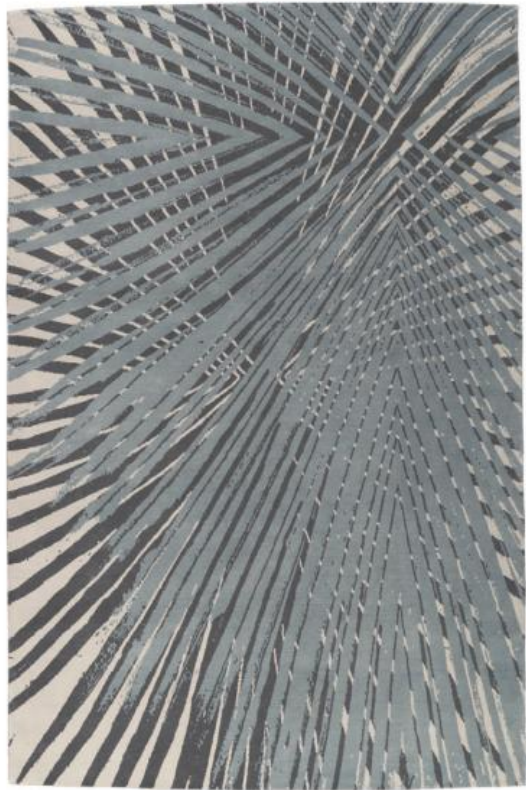
Dahlia
Alexandra Champalimaud
Wool and silk. Price band 9



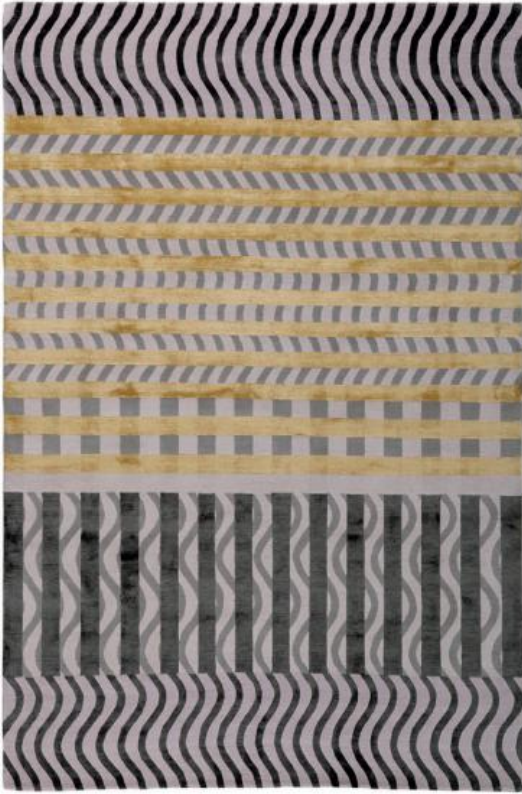
Almond Blue
Allegra Hicks
Wool. Price band 7



Reflections Silver
Allegra Hicks
Wool and silk. Price band 9



Palms
Allegra Hicks
Wool. Price band 7



Wave Construct

Christopher Kane

Wool and silk. Price band 11



Grid Construct

Christopher Kane

Wool and silk. Price band 11



Botanical Anatomy Nude

Christopher Kane

Wool and silk. Price band 9



Botanical Anatomy Grey

Christopher Kane

Wool and silk. Price band 9



Filigree

Christopher Kane

Wool and silk. Price band 12



Hue

Christopher Sharp

Wool and silk. Price band 11



Hue Pale

Christopher Sharp

Wool and silk. Price band 11



Platinum

David Rockwell

Wool and silk. Price band 9



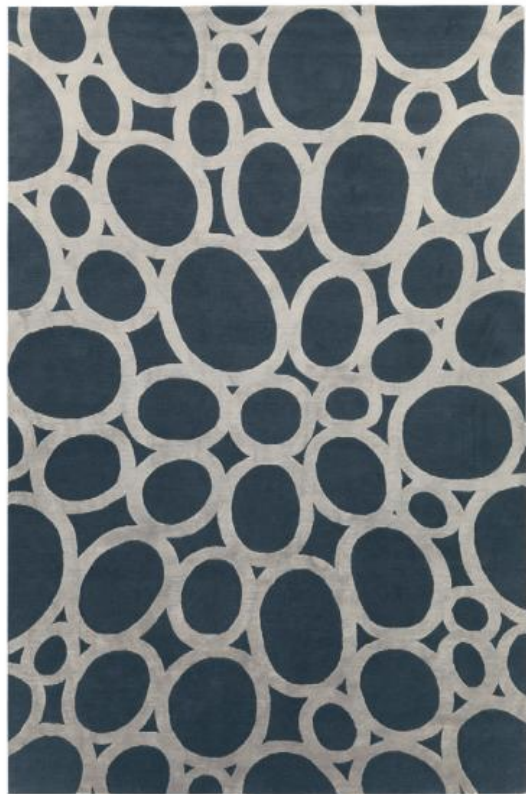
Lola
David Rockwell
Wool. Price band 6



Misty
David Rockwell
Bamboo silk. Price band 5



Spotlight Silver
David Rockwell
Wool and silk. Price band 10



Silver Rings
David Rockwell
Wool and silk. Price band 9



Tidal

David Rockwell

Bamboo silk. Price band 4



Tidal Moonlight

David Rockwell

Bamboo silk. Price band 4



Python Glory

Diane von Furstenberg

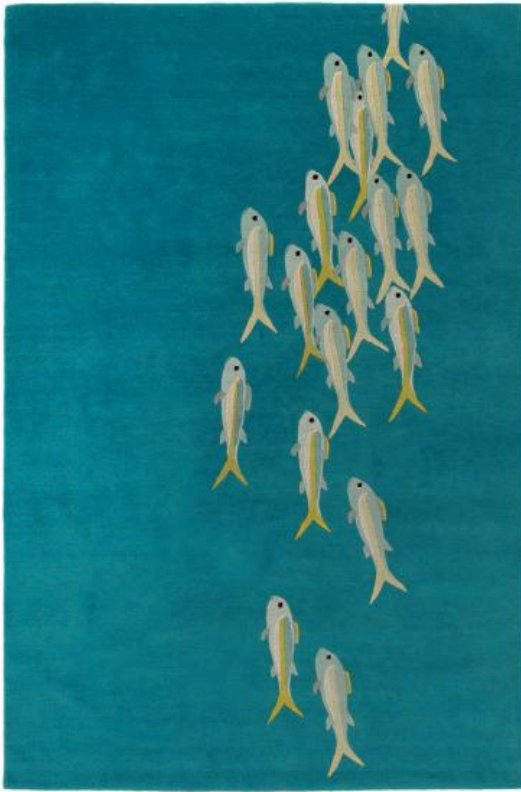
Wool. Price band 9



Climbing Leopard

Diane von Furstenberg

Silk. Price band 15



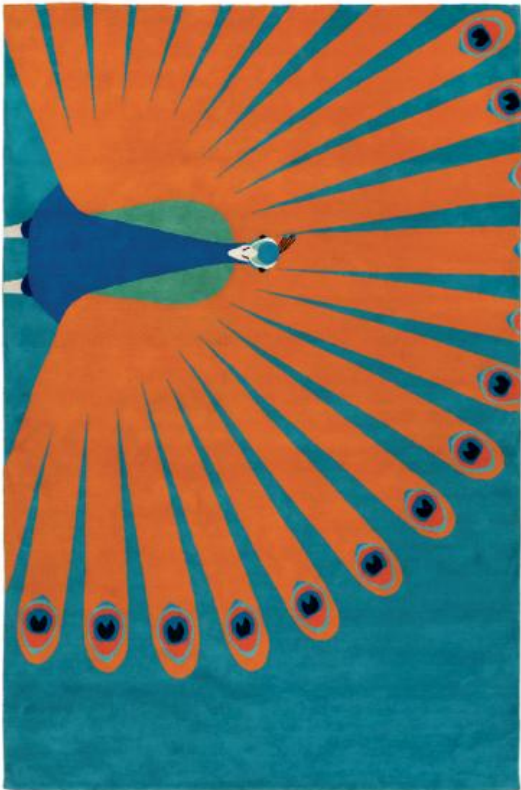
Fishes

Edward Barber & Jay Osgerby
Wool. Price band 7



Owl

Edward Barber & Jay Osgerby
Wool. Price band 7



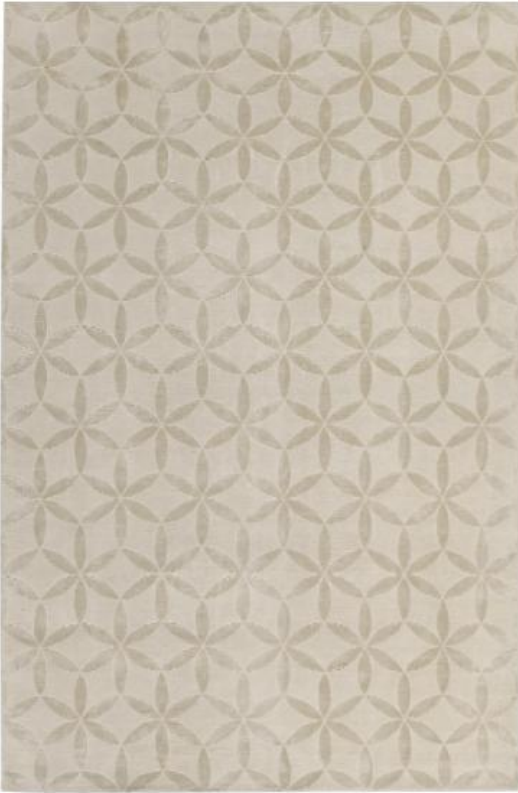
Peacock

Edward Barber & Jay Osgerby
Wool. Price band 7



Tiger

Edward Barber & Jay Osgerby
Wool. Price band 7



Starflower Silk
Edward Barber & Jay Osgerby
Wool and silk. Price band 9



Brushstrokes
Elie Saab
Wool and silk. Price band 11



Lace Leaves
Elie Saab
Wool and silk. Price band 12



In Bloom
Elie Saab
Wool and silk. Price band 13



Zap
Fiona Curran
Wool. Price band 7



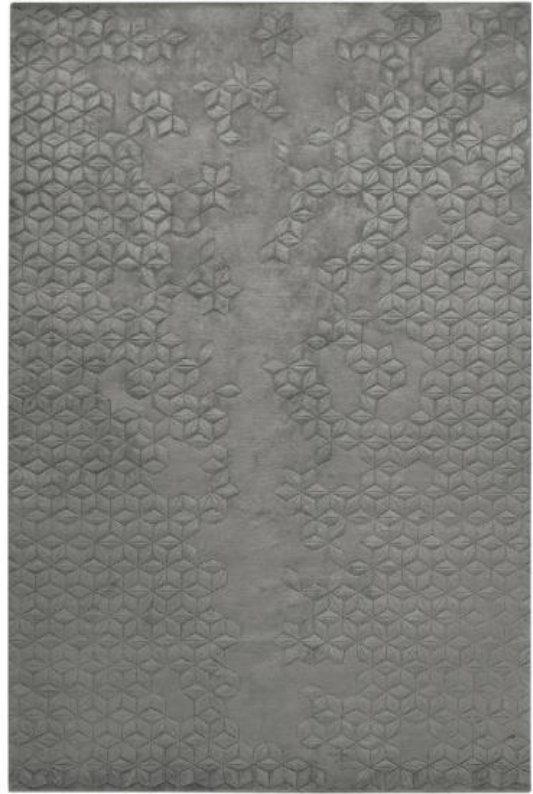
Palette
Fiona Curran
Wool. Price band 7



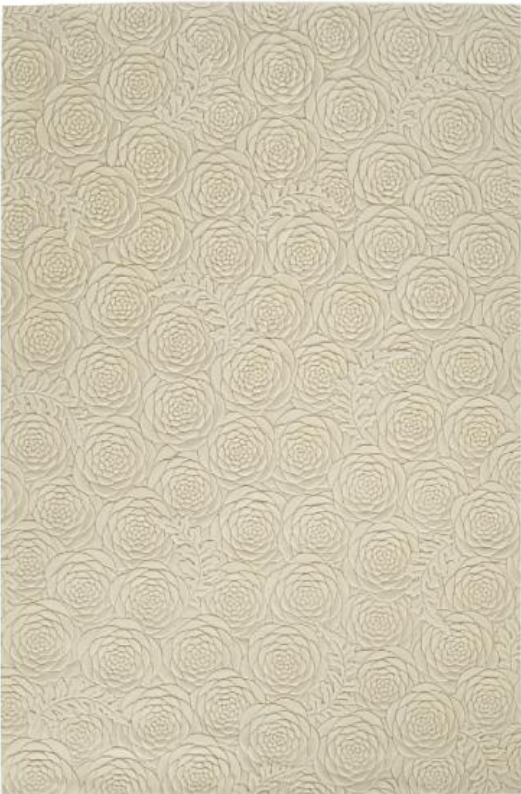
Catella
Emily Todhunter
Wool and silk. Price band 9



Star Silk
Helen Amy Murray
Silk. Price band 13



Star Silk Charcoal
Helen Amy Murray
Silk. Price band 13



Peony
Helen Amy Murray
Wool. Price band 9



Capitone
Jaime Hayon
Wool. Price band 9



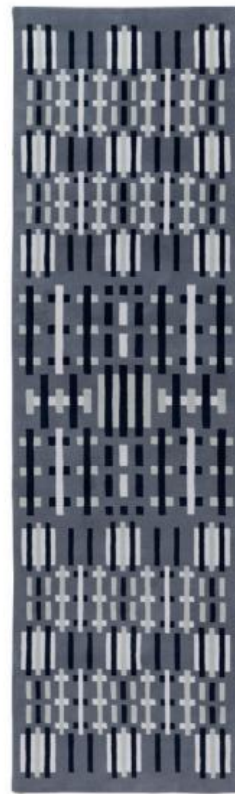
Rai
Jaime Gili
Wool. Price band 7



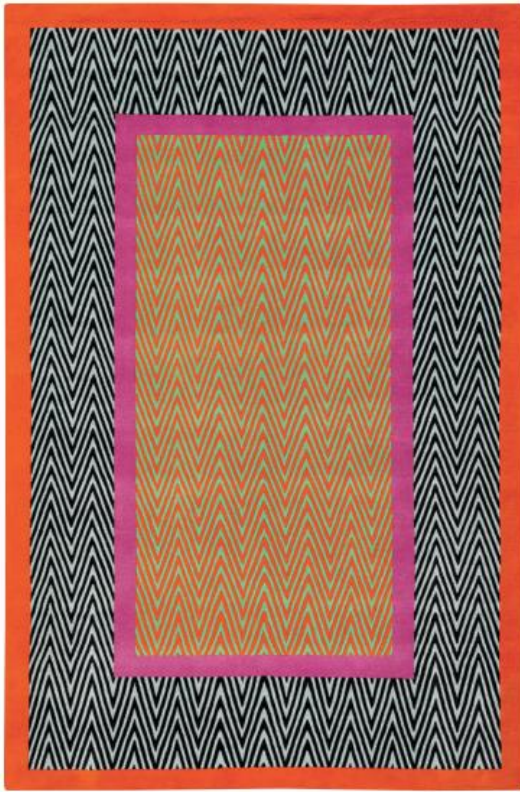
Alma
Jaime Gili
Wool. Price band 7



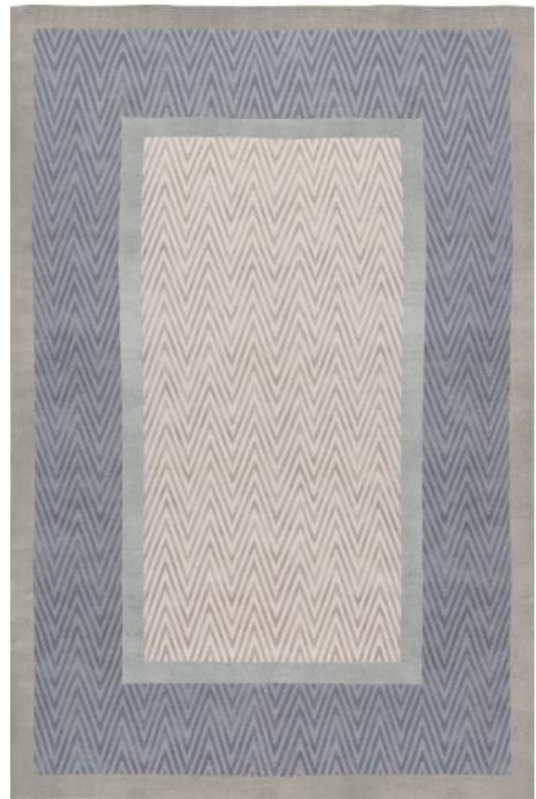
Lewitt
Jonathan Saunders
Wool. Price band 7



Helio
Jonathan Saunders
Wool. Price band 7



Herringbone
Jonathan Saunders
Wool. Price band 7



Herringbone Neutral
Jonathan Saunders
Wool and silk. Price band 11



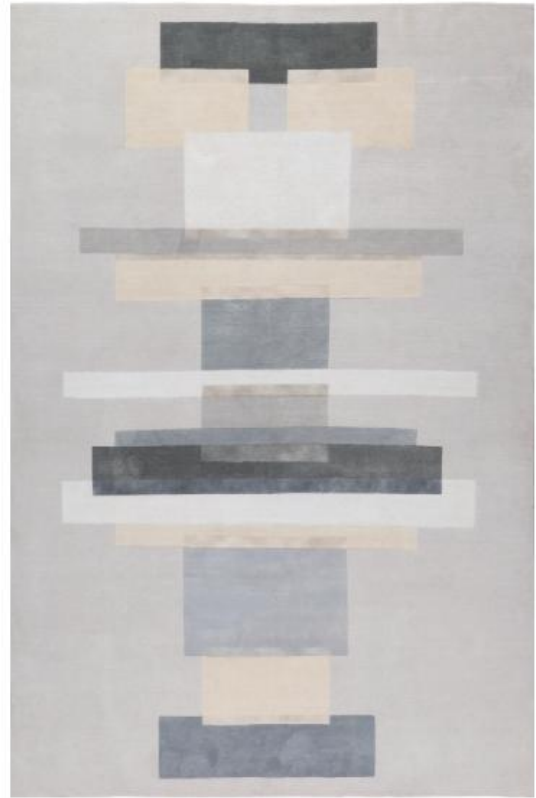
Harrington
Jonathan Saunders
Wool. Price band 7



Hutton
Jonathan Saunders
Wool. Price band 7



Witton
Jonathan Saunders
Wool. Price band 7



Clark
Jonathan Saunders
Wool and silk. Price band 11



Quilt Indigo
Katrin Cargill
Wool. Price band 4



Taos
Katrin Cargill
Wool. Price band 4



Illume

Kelly Wearstler

Wool and bamboo silk. Price band 5



Post

Kelly Wearstler

Bamboo silk. Price band 5



Parallax

Kelly Wearstler

Wool and bamboo silk. Price band 5



Staccato

Kelly Wearstler

Wool and silk. Price band 12



Staccato Steel

Kelly Wearstler

Wool and silk. Price band 12



Channels Copper

Kelly Wearstler

Wool and silk. Price band 9



Flaunt

Kelly Wearstler

Wool and silk. Price band 10



Tracery

Kelly Wearstler

Wool and silk. Price band 9



Wake

Kelly Wearstler

Wool and silk. Price band 10



Mamounia

Martyn Lawrence Bullard

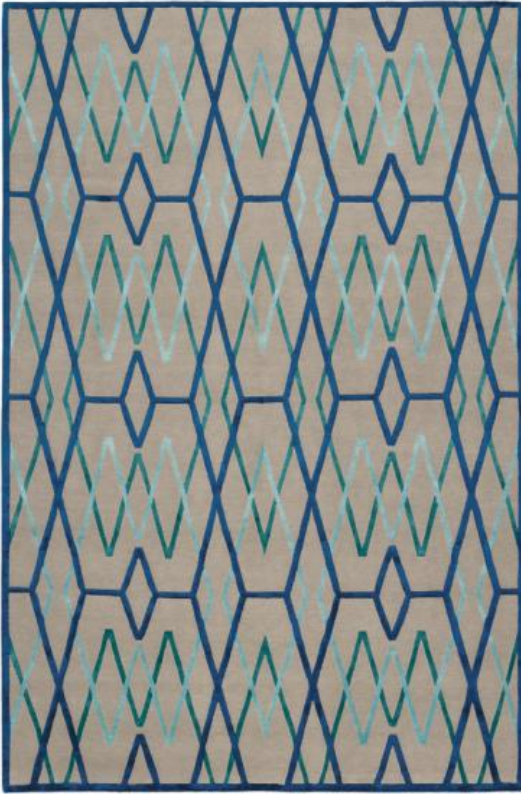
Wool and silk. Price band 13



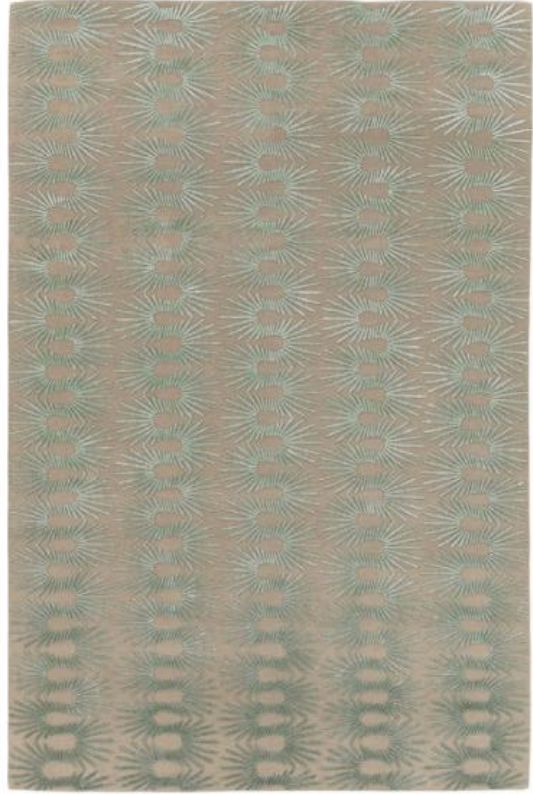
Mamounia Sky

Martyn Lawrence Bullard

Wool and silk. Price band 13



Bamboo Trellis Blue
Neisha Crosland
Wool and silk. Price band 10



Hedgehog Sea
Neisha Crosland
Wool and silk. Price band 13



Farrah Grey
Nicole Fuller
Wool and silk. Price band 9



Farrah Ruby
Nicole Fuller
Wool and silk. Price band 9



Albemarle

Paul Smith

Wool and silk. Price band 10



Peaks

Paul Smith

Wool and silk. Price band 11



Oriental Birds

Paul Smith

Wool and silk. Price band 16



Pale Swirl

Paul Smith

Wool and silk. Price band 12



Carnival Pale
Paul Smith
Wool. Price band 8



Carnival
Paul Smith
Wool. Price band 8



Festival
Paul Smith
Wool. Price band 8



Overlay Runner
Paul Smith
Wool. Price band 8



Split Bright

Paul Smith

Wool. Price band 8



Split Light

Paul Smith

Wool. Price band 8



Refraction Bright

Paul Smith

Wool. Price band 8



Refraction Light

Paul Smith

Wool. Price band 8



Paint Stripe

Paul Smith

Wool. Price band 8



Swirl

Paul Smith

Wool. Price band 8



Cobalt

Rodarte

Wool and silk. Price band 13



Marble

Rodarte

Wool and silk. Price band 11



Madison

Sandra Nunnerley

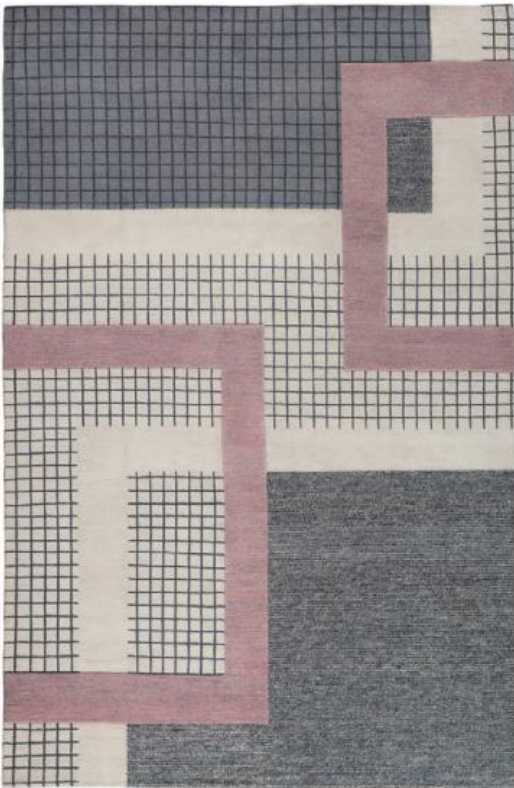
Wool and silk. Price band 8



Gramercy

Sandra Nunnerley

Wool and silk. Price band 7



Mainland Light

Sebastian Herkner

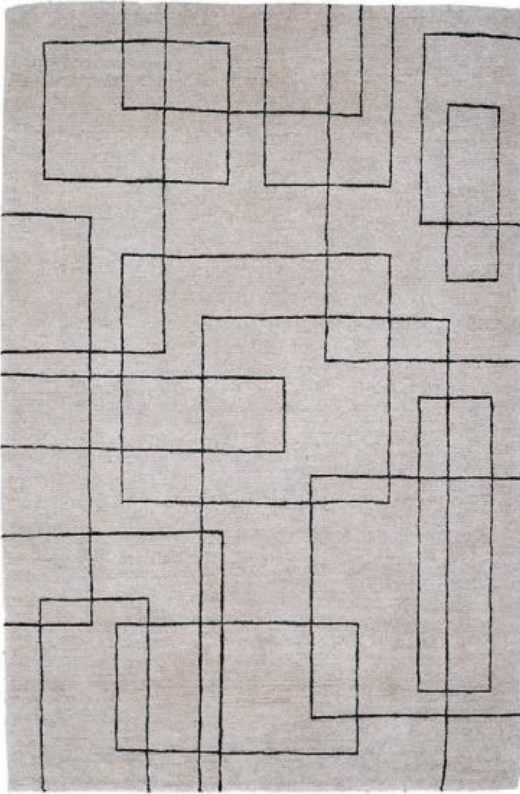
Wool and silk. Price band 7



Mainland Dark

Sebastian Herkner

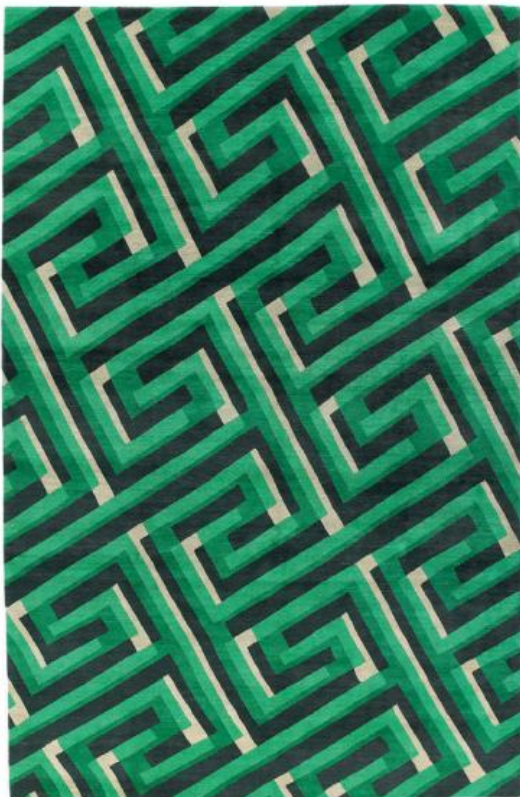
Wool and silk. Price band 7



Cityscape
Sam Turner
Wool. Price band 3



Key Slate
Suzanne Sharp
Wool. Price band 6



Key Shadow
Suzanne Sharp
Wool. Price band 5



Calypso
Suzanne Sharp
Wool and silk. Price band 10



Parisio
Suzanne Sharp
Wool. Price band 6



Bonavita
Suzanne Sharp
Wool. Price band 6



Romy
Suzanne Sharp
Wool and silk. Price band 8



Palermo
Suzanne Sharp
Wool and silk. Price band 9



Cora

Suzanne Sharp

Wool and silk. Price band 9



Ponti Silk

Suzanne Sharp

Wool and silk. Price band 10



Stupa Silver

Suzanne Sharp

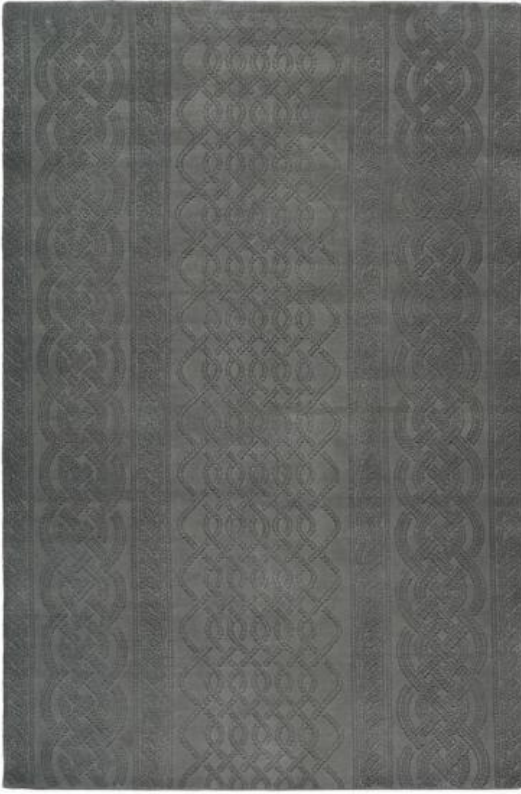
Wool and silk. Price band 10



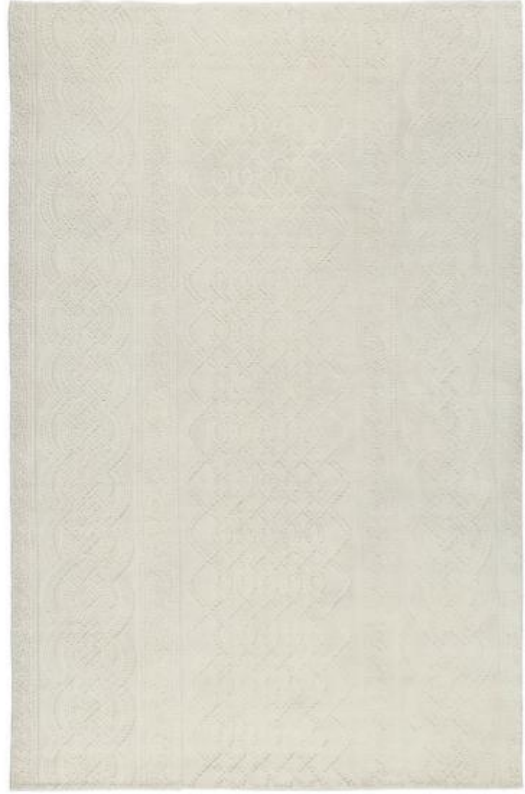
Triangles White

Suzanne Sharp

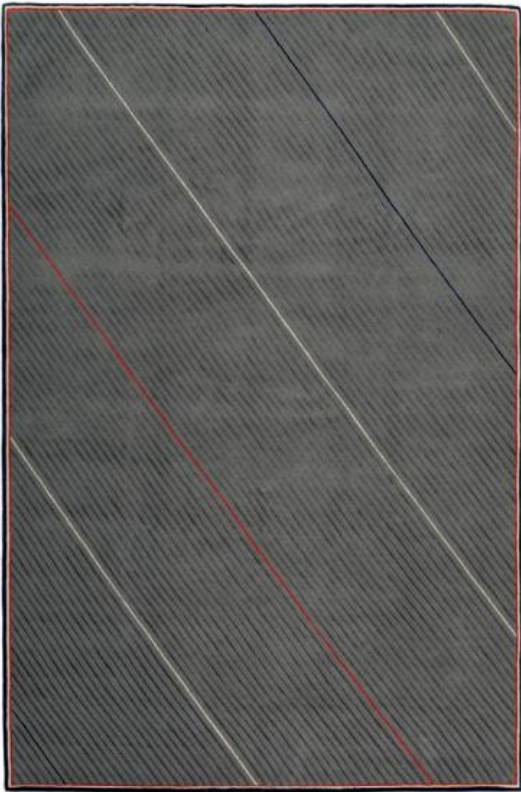
Wool. Price band 5



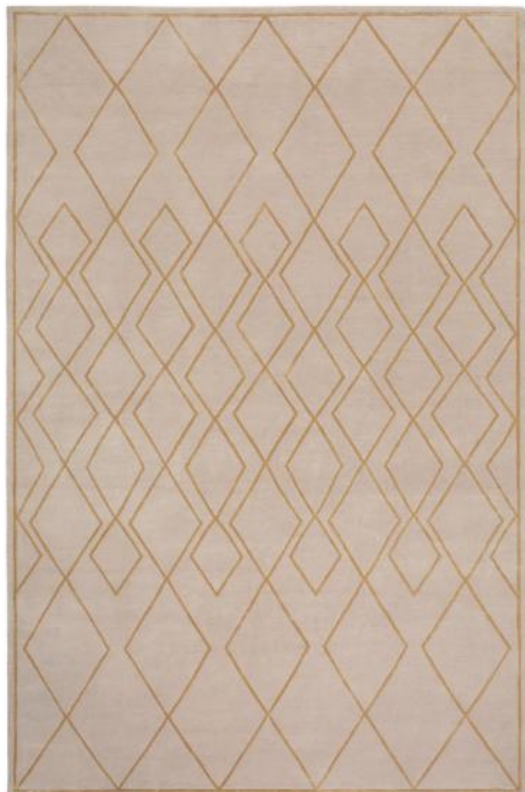
Cable Knit Grey
Thom Browne
Wool. Price band 9



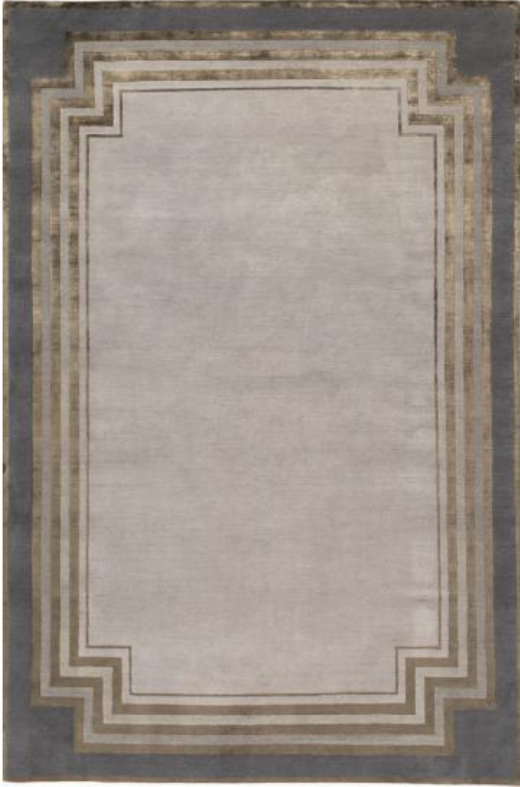
Cable Knit White
Thom Browne
Wool. Price band 9



Repp Stripe
Thom Browne
Wool and silk. Price band 11



Deco Diamond Light
Tim Gosling
Wool and silk. Price band 8



Deco Border

Tim Gosling

Wool and silk. Price band 9



Deco Spiral

Tim Gosling

Wool and silk. Price band 8



Empire

Tim Gosling

Wool and silk. Price band 9



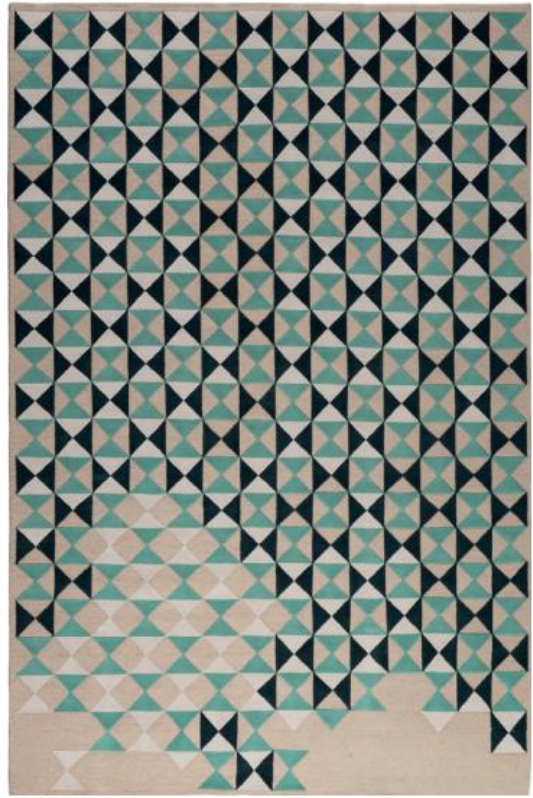
Empire Runner

Tim Gosling

Wool and silk. Price band 9



Form 2
Tom Dixon
Wool. Price band 7



Deltille
Trine Kielland
Wool. Price band 6



Highland
Vivienne Westwood
Wool. Price band 7



Regalia
Vivienne Westwood
Wool and silk. Price band 11



Thistle Gold
Vivienne Westwood
Wool and silk. Price band 11



Thistle Pewter
Vivienne Westwood
Wool and silk. Price band 11



Magnolia Ice wool and silk
Vivienne Westwood
Wool and silk. Price band 13



Spectrum
The Rug Company
Wool and silk. Price band 11



Quantum
The Rug Company
Wool. Price band 5



Bridge
The Rug Company
Wool. Price band 5



Pill Bright
The Rug Company
Wool. Price band 5



Fold
The Rug Company
Wool. Price band 5



Calacatta

The Rug Company

Wool and bamboo silk. Price band 5



Nacre

The Rug Company

Wool and linen. Price band 6



Oceanic

The Rug Company

Wool and bamboo silk. Price band 5



Aarambha

The Rug Company

Bamboo silk. Price band 4



Astor
The Rug Company
Wool. Price band 5



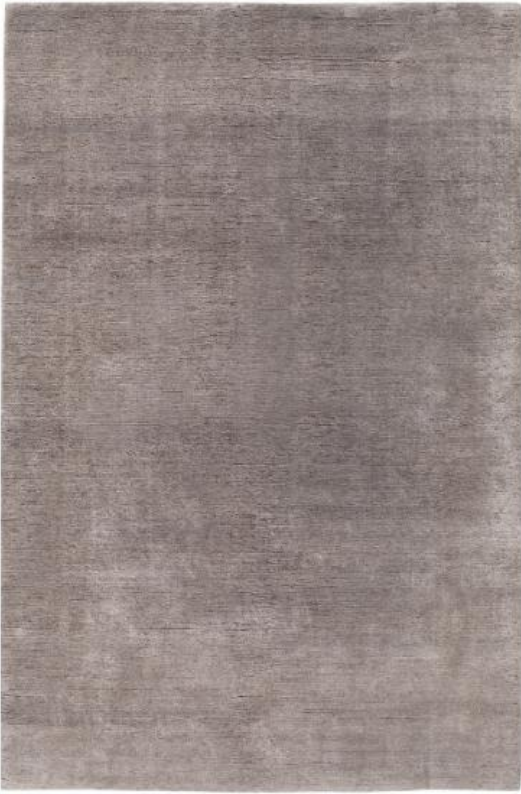
Quad
The Rug Company
Wool. Price band 5



Alpaca
The Rug Company
Alpaca hide. Price band 5



Deep Pile Merino Natural
The Rug Company
Merino wool. Price band 7



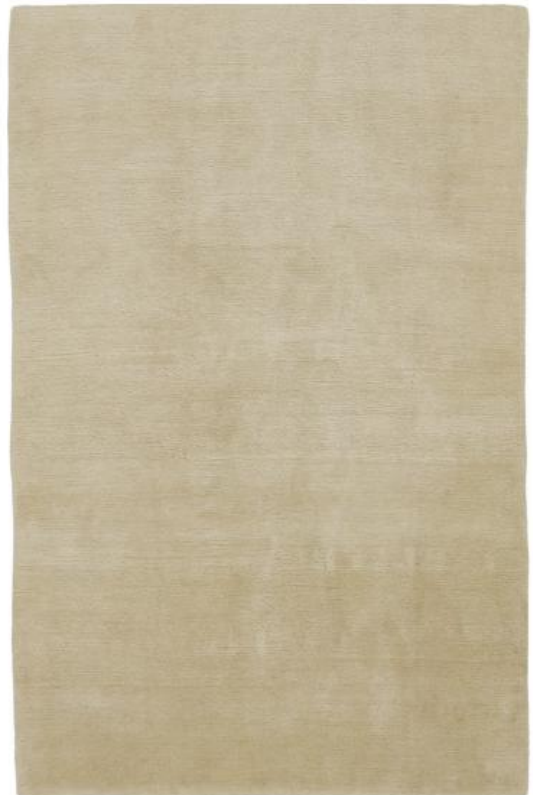
Mohair Sable
The Rug Company
Mohair. Price band 6



Mohair Slate
The Rug Company
Mohair. Price band 6



Mohair Dove
The Rug Company
Mohair. Price band 6

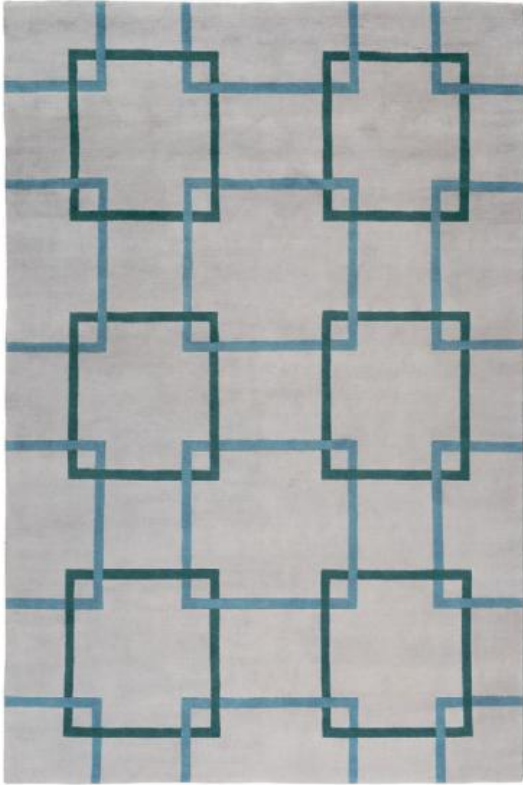


Mohair Natural
The Rug Company
Mohair. Price band 6

Studio Collection

—

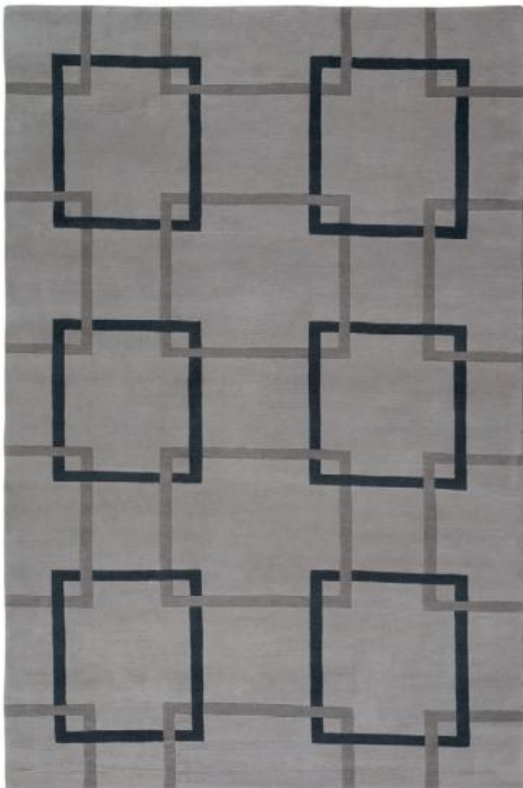
Elevating simplicity over intricacy, our Studio Collection is handknotted in natural fibres of bamboo silk and wool, offering all of our design and craft expertise at accessible price points.



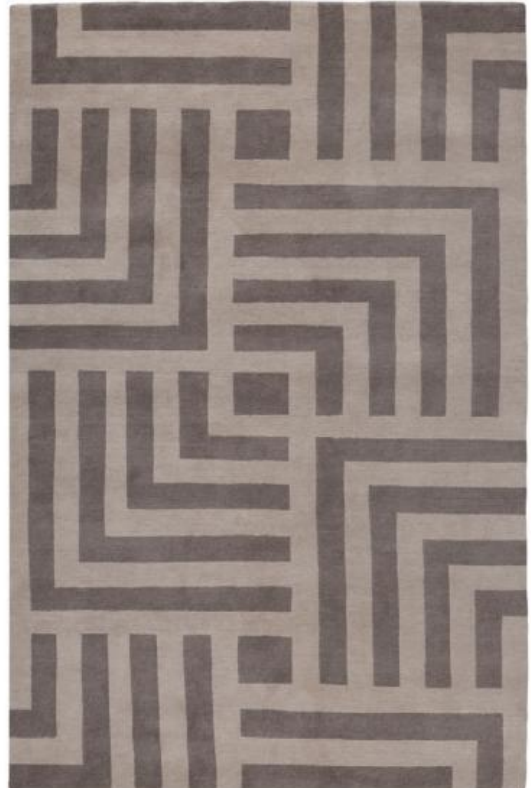
Square Chains Teal
The Rug Company
Wool. Price band 1



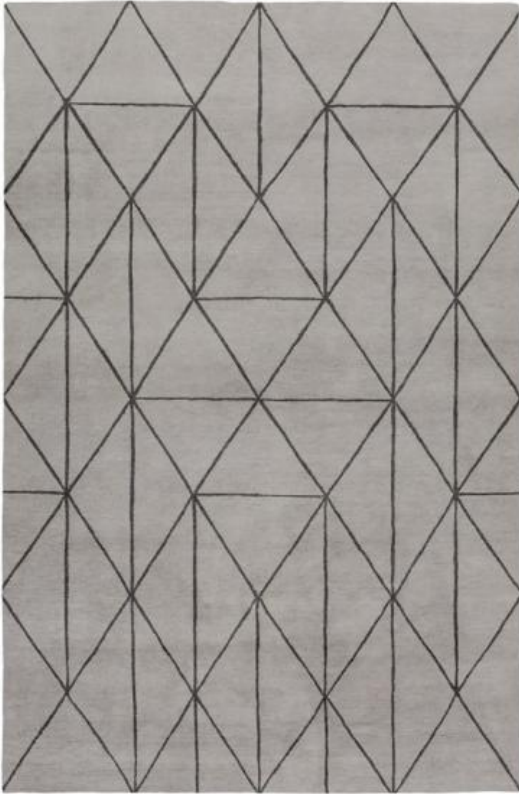
Terrazzo
The Rug Company
Wool. Price band 3



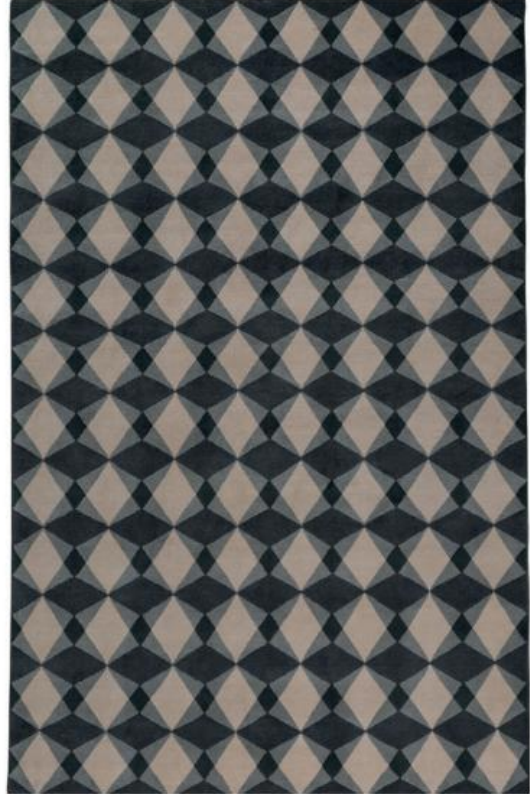
Square Chains Lead
The Rug Company
Wool. Price band 1



Pallas
The Rug Company
Wool. Price band 1



Diamond Maze Grey
The Rug Company
Wool. Price band 3



Mazarin
The Rug Company
Wool. Price band 3



Diamond Maze Navy
The Rug Company
Wool. Price band 3



Element
The Rug Company
Wool. Price band 3



Rif Light
The Rug Company
Wool. Price band 1



Nazar
The Rug Company
Bamboo silk. Price band 3



Kuba
The Rug Company
Wool. Price band 3



Shard
The Rug Company
Wool. Price band 3



Ikat Bamboo Blue
The Rug Company
Bamboo silk. Price band 3



Ikat Bamboo Charcoal
The Rug Company
Bamboo silk. Price band 3



Ikat Bamboo Gold
The Rug Company
Bamboo silk. Price band 3



Ikat Bamboo Pale
The Rug Company
Bamboo silk. Price band 3



Bamboo Silk Bronze
The Rug Company
Bamboo silk. Price band 2



Bamboo Silk Graphite
The Rug Company
Bamboo silk. Price band 2



Bamboo Silk Pale Gold
The Rug Company
Bamboo silk. Price band 2



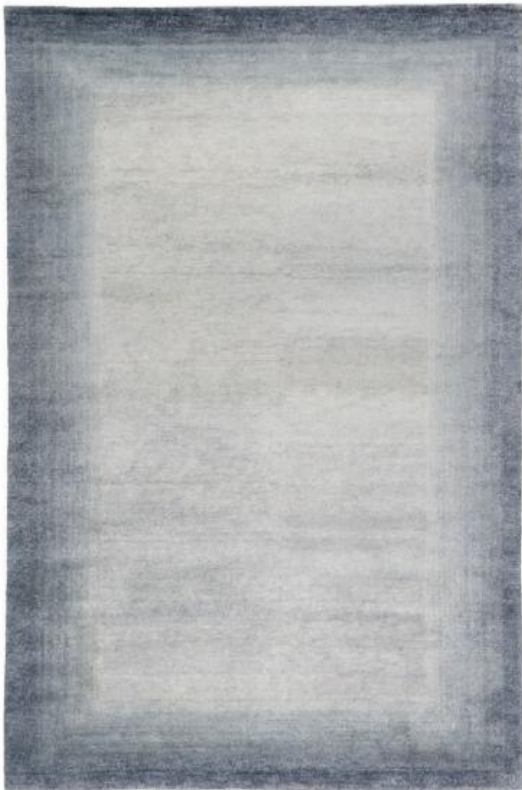
Bamboo Silk Silver
The Rug Company
Bamboo silk. Price band 2



Bamboo Silk Flint
The Rug Company
Bamboo silk. Price band 2



Bamboo Silk Lapis
The Rug Company
Bamboo silk. Price band 2



Bamboo Border Blue
The Rug Company
Bamboo silk. Price band 3



Bamboo Border Charcoal
The Rug Company
Bamboo silk. Price band 3



Handloomed Rugs

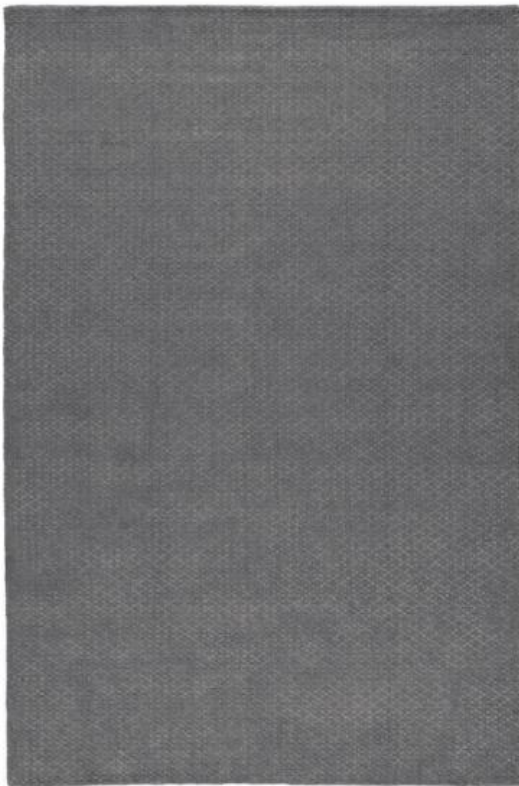
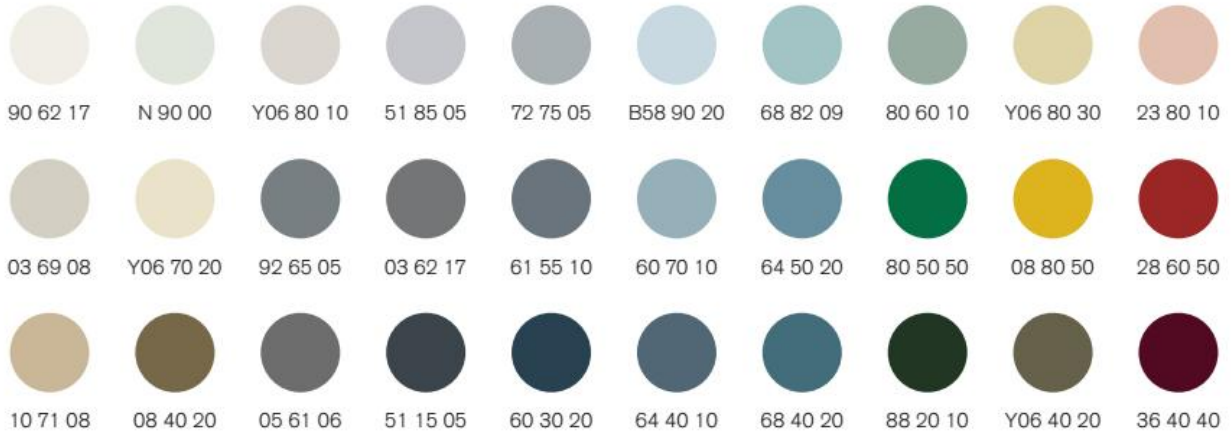
Our handloomed collections are meticulously crafted using a shuttle, which means shorter lead times and enticing price points, without compromising on the exceptional quality for which we are renowned.

Our handloomed designs comprise two collections; The Textures Collection, designed by our in-house studio and The Complementary Colour Collection, created in collaboration with Farrow & Ball.

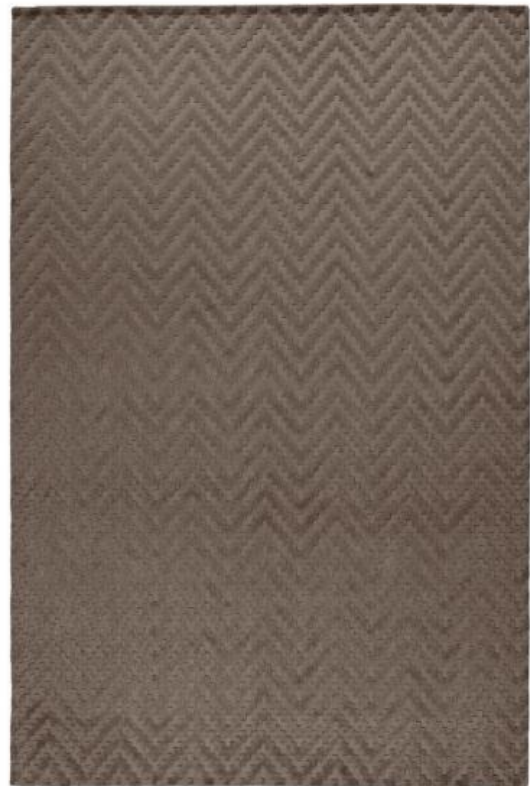
The Textures Collection

-

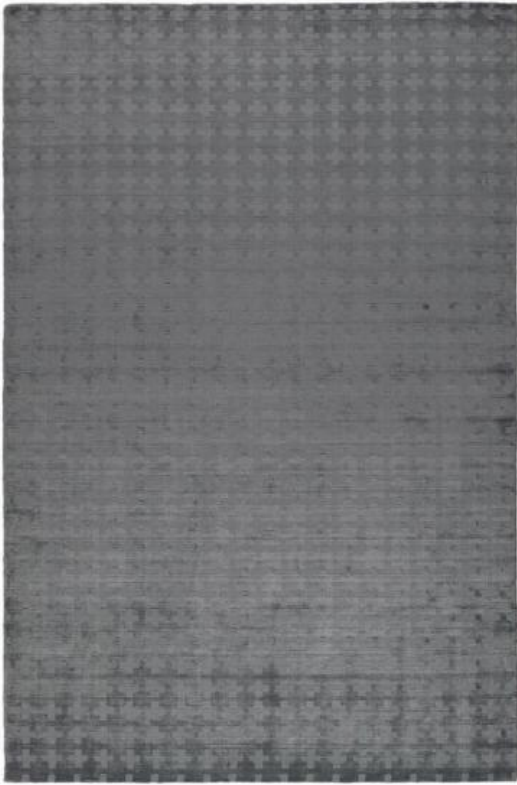
The Textures Collection features 10 handloomed designs that combine textural, geometric forms with the highest quality raw materials. Choose from a colour palette composed of 30 shades which include neutral tones and contrasting brights.



Alcazar
The Rug Company
Linen. Price band E



Carmona
The Rug Company
Silk. Price band K



Castille
The Rug Company
Silk. Price band K



Circuit
The Rug Company
Wool. Price band E



Cloister
The Rug Company
Wool and silk. Price band H



Grove
The Rug Company
Silk. Price band K



Lineage
The Rug Company
Wool and silk. Price band I



Medina
The Rug Company
Silk. Price band K



Rake
The Rug Company
Wool. Price band E



Ribera
The Rug Company
Bamboo silk. Price band F



The Complementary Colour Collection

-

Created in collaboration with Farrow & Ball, The Complementary Colour Collection comprises 12 beautiful colourways – each one perfectly complementing the Farrow & Ball palette. The handloomed rugs, which are available in three different textures, have been skilfully crafted by our team using only the finest quality handspun yarns.



Plain Wool

Cut pile gives the softest touch to the rug and lets the quality of the yarn shine through. To elevate the refined colour palette, we use our springy and soft Tibetan wool, which gives a wonderfully cushioned feeling underfoot.



Cut and Loop Stripe

Alternating rows of cut and loop pile give this rug an interesting texture that delivers a pleasing injection of understated pattern. The wool is handspun to preserve the wool's lanolin, imparting the rug with a natural stain resistance and softness.



Silk Border

A shimmering silk border (10cm / 3.9" inches) frames a soft wool background, in a yarn of a similar or contrasting colour. The silk has a spectacular lustre that reflects the light beautifully and amplifies the colour of the rug.



Holland Stone
Farrow & Ball
Available in 3 textures



Lots Blue
Farrow & Ball
Available in 3 textures



Sam's Stone
Farrow & Ball
Available in 3 textures



Portland Pink
Farrow & Ball
Available in 3 textures



Princedale Pale
Farrow & Ball
Available in 3 textures



Kent Green
Farrow & Ball
Available in 3 textures



Clarendon
Farrow & Ball
Available in 3 textures



Keepers Red
Farrow & Ball
Available in 3 textures



Order Grey
Farrow & Ball
Available in 3 textures



Melrose Yellow
Farrow & Ball
Available in 3 textures



Wizlet
Farrow & Ball
Available in 3 textures



Wooster
Farrow & Ball
Available in 3 textures





Culver Mint
The Rug Company

Handwoven Perennials® yarn. Price band 1



Culver Terracotta
The Rug Company

Handwoven Perennials® yarn. Price band 1



Laguna
The Rug Company

Handwoven Perennials® yarn. Price band 1



Sands
The Rug Company

Handwoven Perennials® yarn. Price band 1



Pacific

The Rug Company

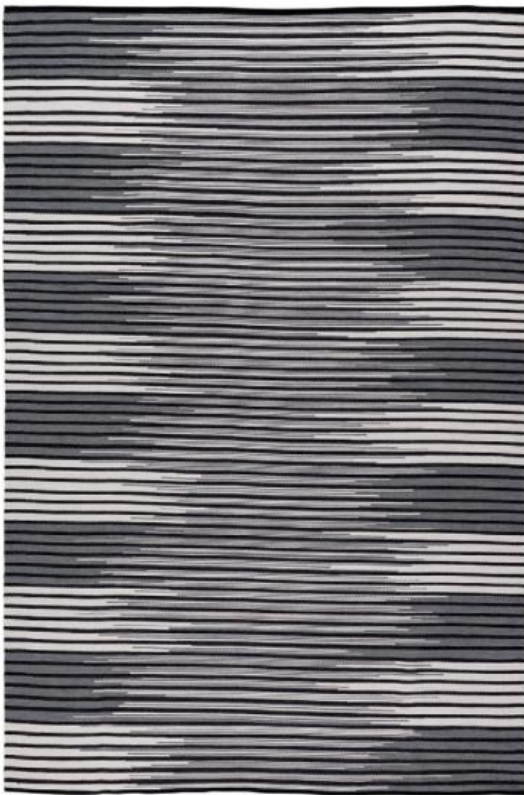
Handwoven Perennials® yarn. Price band 1



Vista

The Rug Company

Handwoven Perennials® yarn. Price band 3



Mirage

The Rug Company

Handwoven Perennials® yarn. Price band 2



Cabo

The Rug Company

Handwoven Perennials® yarn. Price band 3



Marina

The Rug Company

Handwoven Perennials® yarn. Price band 3



Canyon

The Rug Company

Handwoven Perennials® yarn. Price band 2



Neutra

The Rug Company

Handwoven Perennials® yarn. Price band 3



Neutra Mint

The Rug Company

Handwoven Perennials® yarn. Price band 3





Accessories

—

Our collection of designer cushions, wallhangings and blankets is unlike any other; each piece is handwoven in wool or silk.



Chiaroscuro
Alexander McQueen
Wool Aubusson
56 x 56cm / 22" x 22"



Hummingbird
Alexander McQueen
Wool and silk Aubusson with metallic thread
56 x 56cm / 22" x 22"



Hummingbird Ivory
Alexander McQueen
Wool and silk Aubusson with metallic thread
56 x 56cm / 22" x 22"



Monarch
Alexander McQueen
Wool and silk Aubusson
56 x 56cm / 22" x 22"



Skull Black
Alexander McQueen
Wool Aubusson
56 x 56cm / 22" x 22"



Skull Gold
Alexander McQueen
Wool Aubusson and metallic thread
56 x 56cm / 22" x 22"



Botanical Anatomy
Christopher Kane
Wool and silk Aubusson with metallic thread
56 x 56cm / 22" x 22"



Home Committee
Wool Aubusson and appliqué
75 x 50cm / 29.5" x 20"



Whitmore
Jonathan Saunders
Wool needlepoint
56 x 56cm / 22" x 22"



Turner
Jonathan Saunders
Wool needlepoint
56 x 56cm / 22" x 22"



Raymond
Jonathan Saunders
Wool needlepoint
56 x 56cm / 22" x 22"



Harrison
Jonathan Saunders
Wool needlepoint
56 x 56cm / 22" x 22"



Finley
Jonathan Saunders
Wool needlepoint
75 x 50cm / 29.5" x 20"



Birdie Blossom
Paul Smith
Wool Aubusson
56 x 56cm / 22" x 22"



Prism Blue
Paul Smith
Wool needlepoint
56 x 56cm / 22" x 22"



Prism Grey
Paul Smith
Wool needlepoint
56 x 56cm / 22" x 22"



Alphabet &
Sue Timney
Wool crewelwork
56 x 56cm / 22" x 22"



Alphabet A
Sue Timney
Wool crewelwork
56 x 56cm / 22" x 22"



Alphabet B
Sue Timney
Wool crewelwork
56 x 56cm / 22" x 22"



Alphabet C
Sue Timney
Wool crewelwork
56 x 56cm / 22" x 22"



Alphabet D
Sue Timney
Wool crewelwork
56 x 56cm / 22" x 22"



Alphabet E
Sue Timney
Wool crewelwork
56 x 56cm / 22" x 22"



Alphabet F
Sue Timney
Wool crewelwork
56 x 56cm / 22" x 22"



Alphabet G
Sue Timney
Wool crewelwork
56 x 56cm / 22" x 22"



Alphabet H
Sue Timney
Wool crewelwork
56 x 56cm / 22" x 22"



Alphabet J
Sue Timney
Wool crewelwork
56 x 56cm / 22" x 22"



Alphabet K
Sue Timney
Wool crewelwork
56 x 56cm / 22" x 22"



Alphabet L
Sue Timney
Wool crewelwork
56 x 56cm / 22" x 22"



Alphabet M
Sue Timney
Wool crewelwork
56 x 56cm / 22" x 22"



Alphabet N
Sue Timney
Wool crewelwork
56 x 56cm / 22" x 22"



Alphabet O
Sue Timney
Wool crewelwork
56 x 56cm / 22" x 22"



Alphabet R
Sue Timney
Wool crewelwork
56 x 56cm / 22" x 22"



Alphabet S
Sue Timney
Wool crewelwork
56 x 56cm / 22" x 22"



Alphabet T
Sue Timney
Wool crewelwork
56 x 56cm / 22" x 22"



Calypso
The Rug Company
Wool crewelwork
49 x 49cm / 19.5" x 19.5"



Amlia Navy
The Rug Company
Wool crewelwork
56 x 56cm / 22" x 22"



Key Sand
Suzanne Sharp
Wool crewelwork
56 x 56cm / 22" x 22"



Key Aqua
Suzanne Sharp
Wool crewelwork
56 x 56cm / 22" x 22"



Key Emerald
Suzanne Sharp
Wool crewelwork
56 x 56cm / 22" x 22"



Tilt Green
Suzanne Sharp
Wool crewelwork
49 x 49cm / 19.5" x 19.5"



Tilt Coral
Suzanne Sharp
Wool crewelwork
49 x 49cm / 19.5" x 19.5"



Bar Black
The Rug Company
Silk
40 x 40cm / 16" x 16"



Bar Green
The Rug Company
Silk
40 x 40cm / 16" x 16"



Dash Aqua
The Rug Company
Silk
40 x 40cm / 16" x 16"



Dash Smoke
The Rug Company
Silk
60 x 40cm / 23.5" x 16"



Silk Ikat Extra Large
The Rug Company
Silk
75 x 50cm / 29.5" x 20"



Silk Ikat Bolster
The Rug Company
Silk
90 x 30cm / 35" x 12"



Swirl
Paul Smith
Wool needlepoint
75 x 50cm / 29.5" x 20"



Zig Zag
Paul Smith
Wool needlepoint
75 x 50cm / 29.5" x 20"



Heathcliff
Sam Taylor-Wood
Wool Aubusson
75 x 50cm / 29.5" x 20"
Exclusive to UK showrooms



Orb
Vivienne Westwood
Silk Aubusson and badge
75 x 50cm / 29.5" x 20"



Prince Charming
Vivienne Westwood
Wool Aubusson
56 x 56cm / 22" x 22"



Scribble Orb
Vivienne Westwood
Wool Aubusson
56 x 56cm / 22" x 22"



Vivienne's Rose Dust
Vivienne Westwood
Wool Aubusson
75 x 50cm / 29.5" x 20"



Mouth
Vivienne Westwood
Silk Aubusson
75 x 50cm / 29.5" x 20"



Alpaca Blanket Bright

The Rug Company

Alpaca wool

1.80 x 1.30m / 5'11" x 4'3"



Alpaca Blanket Neutral

The Rug Company

Alpaca wool

1.80 x 1.30m / 5'11" x 4'3"



Love Too

Paul Smith

Wool and silk needlepoint

1.45 x 0.90m / 4'9" x 2'11"



Love

Paul Smith

Wool needlepoint

1.04 x 1.04m / 3'5" x 3'5"



Fantastic Journey

Fiona Curran

Wool and silk Aubusson

1.10 x 1.52m / 3'7" x 5'



Flamingo

Suzy Hoodless

Wool Aubusson

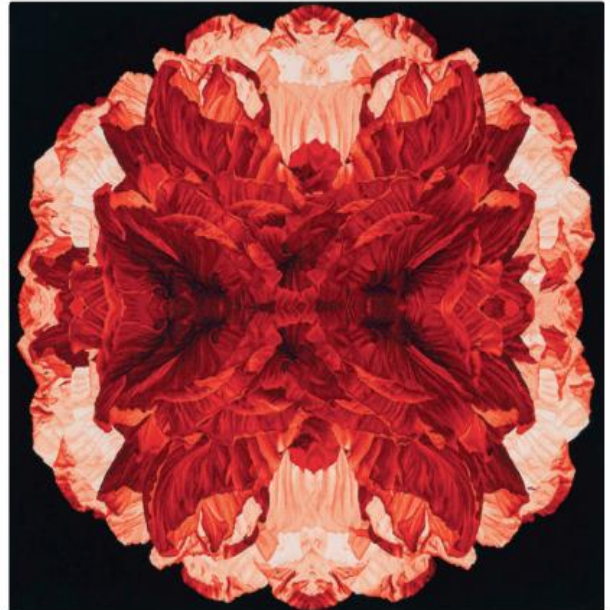
0.80 x 1.20m / 2'8" x 3'11"



Folklore
Alexander McQueen
Wool Aubusson
1.83 x 1.22m / 6' x 4'



Poppy Day
Alexander McQueen
Wool Aubusson
1.20 x 1.20m / 3'11" x 3'11"



Poppy Night
Alexander McQueen
Wool Aubusson
1.20 x 1.20m / 3'11" x 3'11"



Hummingbird 6' x 4'

Alexander McQueen

Wool and silk Aubusson with metallic thread
1.83 x 1.22m / 6' x 4'



Hummingbird Ivory 6' x 4'

Alexander McQueen

Wool and silk Aubusson with metallic thread
1.83 x 1.22m / 6' x 4'



Hummingbird 5' x 3'

Alexander McQueen

Wool and silk Aubusson with metallic thread
1.52 x 0.91m / 5' x 3'



Hummingbird Ivory 5' x 3'

Alexander McQueen

Wool and silk Aubusson with metallic thread
1.52 x 0.91m / 5' x 3'



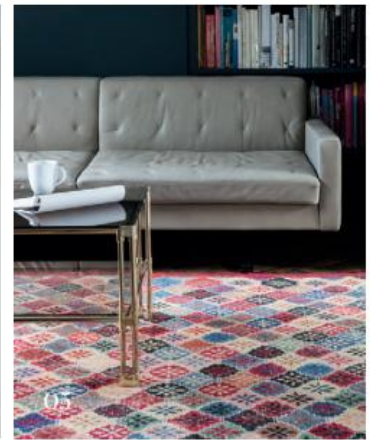


Vintage and Traditional

-

Our Vintage and Traditional Collection is made up of individual, extraordinary pieces, carefully chosen by our team of in-house rug experts. The collection comprises only what they believe to be the very best of each type of rug, bringing together Bayats, Kilims, Atlas Berbers, Persian Silks and many more from all around the world.

Each piece in this ever-changing collection is a one-off and they are not always readily available in all our showrooms. However, if you are looking specifically for a vintage or traditional rug then please let us know and we will be able to find you the perfect piece.



01 Bayats

Bayats are known for their washed-out beauty, with their faded colours and worn-down wool. Our collection of Bayats were woven in Turkey between 25 and 50 years ago, making them vintage pieces. They have been carefully repaired, cleaned and trimmed before being expertly faded and patinated. These Bayats have the same effect as an antique, but without the price tag or the holes that tend to accompany older pieces.

02 Kilims

Kilims are flatweave rugs that have been handwoven on the loom rather than handknotted. Our collection is diverse, hailing from far-flung locations across Central Asia, Eastern Europe and Northern Africa. Design and colour vary greatly depending on where in the world they were woven, but all share an alluring timeworn look that adds a touch of exoticism to any home.

03 Ottoman Garden

Our Ottoman Garden collection pairs classical motifs from the Ottoman Empire with vibrant, contemporary colour palettes. They are handknotted close to the Afghan border in Pakistan using hand spun Ghazni wool, chosen for its exceptionally soft, strong and lustrous texture.



04 Suzanis

Suzanis are highly decorative textiles from central Asia that have been made in the same way for over 400 years. Brightly coloured fruits and flowers are hand embroidered in silk onto a cotton or silk background, with opulent effect. Endlessly versatile, they can be used as rugs, bedspreads, throws or wallhangings.

05 Damalis

Our vintage Damalis were woven in Turkey in the middle of the last century. Most rugs from this period have traditional designs, but Damali weavers boldly took their inspiration

from modernism. In these designs a kaleidoscope of colours scatter across the rugs in small-scale geometric repeats. Each rug has been handknotted in wool using a traditional double knot and then trimmed to a very short pile height. The washed-out look is achieved through expertly distressing the surface and sun-fading the colours.

06 Atlas Berber

These vintage rugs are made by Berber tribespeople, living in the snow-capped Atlas Mountains. The decadently deep pile weavings are an art form that has survived for centuries, yet one that can look

surprisingly modern, as demonstrated in interiors by Le Corbusier, Alvar Aalto and Ray Eames. Admired for their graphic simplicity, they are also said to ward off negative energy.

07 Persian Silks

Persian silk rugs are widely considered to be the very pinnacle of handknotted rugs. They are made in Iran by master weavers, who rightly believe that no one can weave a finer or more collectable piece. Intricately knotted in silk on a silk warp and weft, the rugs often take years to complete.



Our Designers

We are privileged to collaborate with many of the world's most revered and celebrated designers, fellow creative spirits who share our quest for outstanding quality and craft. Whatever the realm in which they reign, be it fashion, art, architecture or product design, we harness their incredible talent and translate their unique vision into a beautiful handcrafted rug, cushion or wallhanging.



Our Designers

-

What is your design mantra?



Sarah Burton for Alexander McQueen
"Be innovative and celebrate creative freedom while upholding the utmost respect for traditional craftsmanship and the touch of the hand."



Kelly Wearstler
"Love colour. Take risks. Stay curious."



Elie Saab
"Simplicity and glamour - those are my standards whether I am designing clothes or anything else."



Christopher Kane
"Always learn and educate yourself through the design process. I always remain open to new things regardless of how they will be perceived."



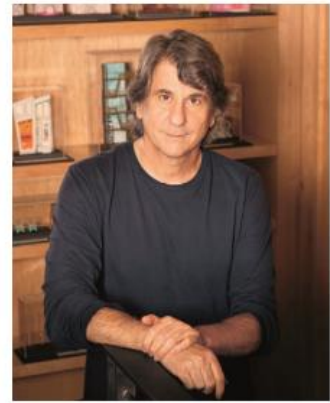
Christopher Sharp
"Love what you make and never concede to compromise on perfection."



Tom Dixon
"Extraordinary objects for everyday use."



Edward Barber & Jay Osgerby
"Design for longevity."



David Rockwell
"Curiosity, restlessness and wonder. As a designer I need to be constantly learning and making. Discovery is such a powerful driver."



Nicole Fuller
"There are no rules, as each space is its own unique interior. I like to think of my design approach as creating a jewel box of my clients lives."



Paul Smith
"Classic with a twist."



Jonathan Saunders
"My process always combines a considered approach and spontaneous trial and error. The mistakes and the unplanned decisions can be the most exciting. Things come alive when you can feel them in your hands in those final stages. I try not to be afraid to change the plan."



Sebastian Herkner
"To create objects which become companions in our interiors. Develop high quality designs with a timeless approach."



Rodarte
"Follow your instincts and create with passion."



Alexandra Champalimaud
"Cultured, elegant and comfortable. Don't shy away from a challenge - be bold, be memorable, and above all else, be great at what you do."



Martyn Lawrence Bullard
"The ultimate luxury is comfort. This turns a house into a home, creating the ultimate personal sanctuary that welcomes all who visit."



Sandra Nunnerley
"Our passion has always been to create spaces and objects that subtly unveil their beauty, while radiating serenity, balancing function with aesthetics."



Katrin Cargill
"Don't make something unless it is both necessary and useful; but if it is necessary and useful, don't hesitate to make it beautiful."
Shaker Philosophy



Vivienne Westwood
"Buy less, choose well, make it last."



Trine Kielland
"I am enough of an artist to draw freely upon my imagination."
Quote from A. Einstein



Adam Hunter
"Trust the process."



Tim Gosling
"Learn the design rules as much as possible... so you can break them into something new."



Neisha Crosland
"A design must delight the eye. It must have an unidentifiable familiarity about it but at the same time it must look totally fresh."



Fiona Curran
"Engage with the world through colour and avoid thinking in black and white."



Jaime Gili
"Complicate, observe, simplify... Observe... Repeat..."



Jaime Hayon
"To design for people and for fun, to challenge myself, to learn by doing something new, and to love what I do."



Suzanne Sharp
"Inspiring and sensual."



Sue Timney
"Whatever your style be true to yourself."



Helen Amy Murray
"For every hour at a computer, I spend at least an hour with a pencil, paper and my imagination."

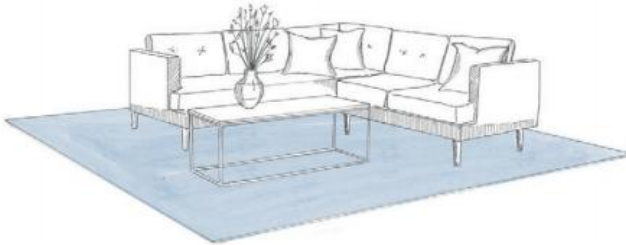


Allegra Hicks
"To be faithful to my design vocabulary but not be scared of pushing the boundaries."

Size and Fitting

Most rooms need a rug – a room without a rug can appear unwelcoming and unfinished. A well chosen rug will transform a space, introducing softness and a sense of luxury, particularly if it is of good quality and a high standard of craftsmanship.

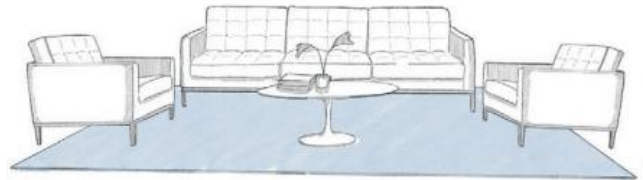
Do not be afraid of colour or pattern; choose a rug as you would a piece of art. Most of all, you must love it as a well-made rug will last a lifetime and can be moved to any room or even to a different home.



Living Room A

Before choosing a rug, you must first understand its purpose. A statement piece will add personality and define the space; a more neutral design will blend seamlessly into the space for a unified tranquil look. If you are attempting to break up a room into different areas, a number of smaller rugs can do so beautifully.

A rug can anchor and define a space so it is important to choose the size carefully. While there are no rules for how to place a rug, there is usually a size that feels just right and balanced in the space.



Living Room B



Living Room C

Living Room

As a general rule a seating area needs a rug to make it feel complete. In a large open-plan space rugs can be used to define different areas and create rooms within rooms.

Avoid choosing a rug that is too small as this can look lost. It is much better to specify a generous size that flows under and unifies the furniture (Living room A). In this case, leave sufficient extra space around all the furniture so it does not appear 'perched' on the edge of the rug.

Alternatively, placing the rug about half way under sofas and chairs can look just right (Living room B).

Some styles of furniture work best when left off the rug (Living room C), and smaller pieces of furniture such as side-tables are generally best either on or off the rug and not half-half. In this case, the rug should be slightly longer and wider than the furniture, and not too far from the seating.



Dining Room

For a dining room, a large rug under the table will deaden the sound in the room and bring colour, pattern and texture. Ideally, the rug should be in proportion to the table, and larger than it so that there is sufficient space to pull out a chair and sit down without the back legs coming off the rug. The minimum that allows for this is 75cm (29"), so that the ideal size is generally at least 1.50m (59") larger than the table in each direction.



Hallway

It is often best to order a custom piece that fits the space precisely, with a natural start and end point, however we do also carry some runners in stock.



Bedroom A



Bedroom B

Bedroom

For a bedroom, the rug is best placed underneath the bed, framing it but stopping short of the side tables (Bedroom A) or running all the way to the end of the wall at the headboard end (Bedroom B). This allows for rug underfoot when one gets out of bed.



Stairs

We have pioneered the use of handmade rugs on stairs. The pieces will need to be custom made to fit, and measuring should be carried out by whoever is going to install them. Straight runs of stairs are quite simple but angled or curved stairs will require shaped pieces of rug to cover them.



Custom Shapes

Sometimes the best solution is a custom shape, and we can make almost anything. The best way to do this is usually for us to produce a template that can be sent to our weavers.

Care and Cleaning

Cleaning

A handknotted rug offers excellent durability. It can be cleaned and repaired almost indefinitely and should last a lifetime. For all of our handmade rugs we recommend treating everyday stains and spillages by mopping up the area and using a solution of soft soap in warm water if required. Accidents do happen and if you experience a serious spillage please call your nearest showroom for recommended cleaners and advice.

Fluff

New rugs can shed a bit of fluff, which is created from excess fibres that were not properly incorporated into the yarn during spinning. This is normal, and is not a sign that your rug is falling apart! It is best to vacuum a rug often at first - after some time the fluffing will lessen and eventually cease.

Abrash

Yarn prepared by hand is not completely uniform in colour or thickness. When this yarn is dyed it does not take the colour evenly, and these inconsistencies produce a subtle stripe effect in the finished rug, called 'abrash'. This is a desirable feature of handmade rugs, imparting them with life and character. Rugs made without abrash appear flat and look machine-made.

Fading

We use only the best dyes that offer the most resistance to fading. However, there are no dyes that are completely photostable or impervious to fading in sunlight. Over time, any material left in strong sunlight will fade. Traditionally, the best way to mitigate this effect is to turn a rug from time to time so that at least any fade is even.

Loose threads

When a rug is made on the loom the initial pile is significantly longer and is then sheared down to the desired height. Occasionally some longer threads are not cut and become embedded in the pile. Over time these threads can protrude and should be carefully cut with sharp scissors. With handknotted rugs it is also possible that an individual knot has missed the warp or weft and therefore comes undone. This also creates a loose thread and in this instance it is best to gently pull it out. As each knot is separate the rug will not unravel, and the surrounding knots will simply fill in the space. If a thread does not come out easily when pulled it should be trimmed. With our handloomed rugs it is best to simply trim a loose thread if any appear.



Contact

-

UK

-

London – Holland Park

T: +44 (0)20 7908 9999

E: hollandpark@therugcompany.com

London – Chelsea

T: +44 (0)20 7384 0980

E: kingsroad@therugcompany.com

London – Harrods

T: +44 (0)20 7587 848

E: harrods@therugcompany.com

London – King’s Cross

T: +44 (0)20 7384 0988

E: thecoaloffice@therugcompany.com

EUROPE

-

Germany – Hamburg

T: +49 40 3802 3980

E: hamburg@therugcompany.com

Germany – Munich

T: +49 89 4522 0790

E: munich@therugcompany.com

Spain – Barcelona

T: +34 934 107 441

E: info@alfombrasbsb.com

Spain – Madrid

T: +34 917 812 753

E: madrid@alfombrasbsb.com

Brussels

T: +32 2 513 43 73

E: brussels@therugcompany.com

Moscow

T: +7 (495) 795 06 01

E: moscow@therugcompany.ru

NORTH AMERICA

-

New York – Uptown

T: +1 212 644 9200

E: nyuptown@therugcompany.com

New York – Soho

T: +1 212 274 0444

E: nysoho@therugcompany.com

Los Angeles

T: +1 310 659 9955

E: la@therugcompany.com

Miami

T: +1 305 576 9868

E: miami@therugcompany.com

Chicago

T: +1 312 379 1700

E: chicago@therugcompany.com

Dallas

T: +1 214 760 4888

E: dallas@therugcompany.com

San Francisco

T: +1 415 870 3000

E: sf@therugcompany.com

Boston

T: +1 857 504 2105

E: boston@therugcompany.com

Atlanta

T: +1 404 237 5079

E: info@travisandcompany.com

Toronto

T: +1 416 548 7788

E: arsalesto@avenue-road.com

Vancouver

T: +1 778 588 6840

E: arsalesvan@avenue-road.com

Mexico City

T: +52 (55) 4170 0115

E: mexico@therugcompanylondon.com.mx

REST OF WORLD

-

Cape Town

T: +27 (0)21 418 0972

E: capetown@therugcompany.co.za

Beirut

T: +961 (0)1 322 090

E: beirut@therugcompany.com.lb

Dubai

T: +971 (0) 4 379 1217

E: info@therugcompany.ae

Kuwait

T: +965 22253456

E: info@samovarcarpets.com



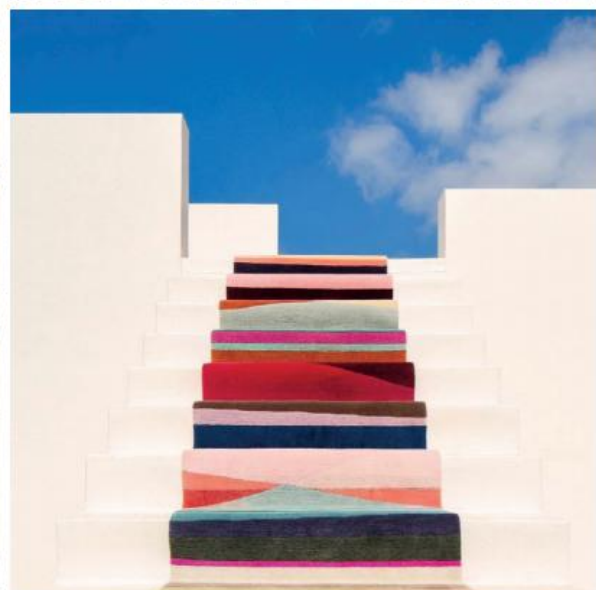
THE RUG COMPANY

THE RUG COMPANY

THE RUG COMPANY

THE RUG COMPANY

722



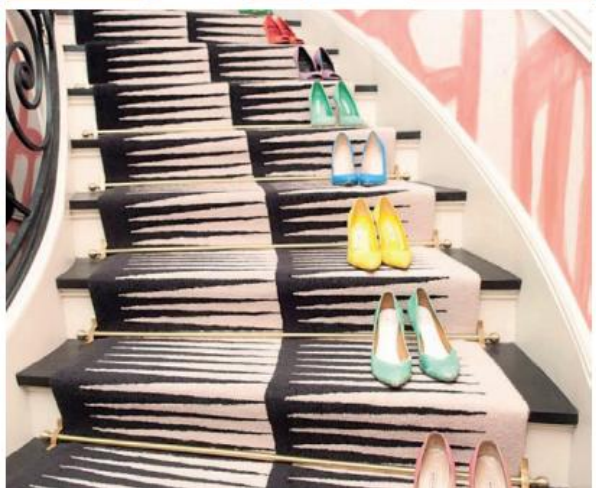


Add to our story

@TheRugCompany



THERUGCOMPANY.COM



- A**
- Aarambha 166, 230
 Albemarle 110, 217
 Alcazar 176, 242
 Alma 210
 Almond Blue 9, 201
 Alpaca 15, 170, 231
 Alpaca Blanket Bright 265
 Alpaca Blanket Neutral 265
 Alphabet cushions 256, 260
 Amli Navy 262
 Astor 231
 Atlas Berber 270
- B**
- Bamboo Border Blue 239
 Bamboo Border Charcoal 239
 Bamboo Silk Bronze 174, 238
 Bamboo Silk Flint 239
 Bamboo Silk Graphite 174, 238
 Bamboo Silk Lapis 239
 Bamboo Silk Pale Gold 238
 Bamboo Silk Silver 175, 238
 Bamboo Trellis Blue 124, 216
 Bar Black 31, 263
 Bar Green 263
 Bayat 270
 Birdie Blossom 33, 259
 Bonavita 77, 223, 277
 Botanical Anatomy cushion 258
 Botanical Anatomy Grey 149, 202
 Botanical Anatomy Nude 152, 202
 Bridge 22, 28, 30, 32, 55, 229
 Brushstrokes 48, 49, 207
- C**
- Cable Knit Grey 172, 225
 Cable Knit White 17, 164, 225
 Cabo 17, 253
 Calacatta 15, 45, 230
 Calypso 31, 75, 222
 Calypso cushion 262
 Canyon 254
 Capitone 166, 209
 Carmona 178, 242
 Carnival 19, 125, 218
 Carnival Pale 130, 136, 137, 218
 Castille 242
 Catella 100, 208
 Channels Copper 21, 38, 39, 214
 Chiaroscuro 4, 17, 143, 199
 Chiaroscuro cushion 258
- Circuit** 180, 240, 242
Cityscape 222
Clarendon 248
Clark 212
Climbing Leopard 30, 160, 205
Cloister 178, 243, 245
Cobalt 105, 220
Cora 224
Culver Mint 15, 193, 250, 252, 255
Culver Terracotta 191, 252
- D**
- Dahlia** 150, 201
Damalis 271
Dash Aqua 263
Dash Smoke 263
Deco Border 226
Deco Diamond Light 111, 225
Deco Spiral 33, 112, 226
Deep Pile Merino Natural 231
Deep Pile Merino White 15, 174
Deltille 25, 31, 91, 227
Desert Silver 170
Diamond Maze Grey 66, 67, 235
Diamond Maze Navy 81, 235
- E**
- Element** 88, 235
Empire 115, 226
Empire Runner 114, 226
- F**
- Fantastic Journey** 265
Farrah Grey 51, 216
Farrah Ruby 56, 216, 275
Festival 118, 119, 218, 275
Filigree 94, 95, 203
Finley 259
Fishes 206
Flamingo 265
Flaunt 33, 134, 214
Fold 83, 229
Folklore 266
Form 2 227
- G**
- Gramercy** 23, 93, 221
Grid Construct 14, 106, 107, 202, 274
Grove 243
- H**
- Harrington** 121, 211
Harrison 259
Heathcliff 264
Hedgehog Sea 216
Helio 210
Herringbone 9, 28, 120, 211, 275
Herringbone Neutral 211
Highland 14, 87, 227, 276
Holland Stone 184, 247
Home 258
Hue 203
Hue Pale 203
Hummingbird 32, 199
Hummingbird 5' x 3' 267
Hummingbird 6' x 4' 267
Hummingbird cushion 33, 258
Hummingbird Ivory 158, 159, 199
Hummingbird Ivory 5' x 3' 267
Hummingbird Ivory 6' x 4' 267
Hummingbird Ivory cushion 258
Hutton 211
- I**
- Ikat Bamboo Blue** 237
Ikat Bamboo Charcoal 237
Ikat Bamboo Gold 237
Ikat Bamboo Pale 237
Illume 60, 61, 213
In Bloom 146, 147, 207
- K**
- Keepers Red** 187, 248
Kent Green 248
Key Aqua 262
Key Emerald 262
Key Sand 262
Key Shadow 7, 29, 33, 76, 222
Key Slate 78, 222
Kilims 270
Kuba 70, 236
- L**
- Lace Leaves** 62, 63, 207
Laguna 252
Lewitt 210
Lineage 16, 177, 244
Lola 30, 37, 204
Lots Blue 186, 247
Love 265
Love Too 265

M		Peacock	162, 206	Split Light	31, 131, 219
Madison	59, 98, 99, 221	Peaks	217	Spotlight Silver	46, 204
Magnolia Ice wool and silk	151, 228	Peony	168, 209	Square Chains Lead	234
Mainland Dark	135, 221, 275	Persian Silks	271	Square Chains Teal	82, 234
Mainland Light	141, 221	Pill Bright	123, 229	Staccato	9, 42, 214, 281
Mamounia	30, 215	Plain Silk	170	Staccato Steel	40, 41, 214
Mamounia Sky	30, 103, 215	Platinum	17, 113, 203	Star Silk	13, 167, 209
Marble	30, 31, 52, 220	Ponti Silk	224	Star Silk Charcoal	209
Marina	188, 189, 254	Pony	156, 200	Starflower Silk	207
Mazarin	90, 235	Poppy Day	266	Stingray Neutral	200
Medina	181, 244	Poppy Night	266	Stingray Red	23, 200
Melrose Yellow	182, 249	Portland Pink	183, 247	Stupa Silver	169, 224
Military Brocade Ivory	16, 104, 199	Post	64, 213	Suzanis	270
Mirage	190, 253	Prince Charming	264	Swirl	128, 220
Misty	54, 204	Princedale Pale	248	Swirl cushion	33, 264
Mohair Dove	232	Prism Blue	17, 122, 259		
Mohair Natural	15, 171, 232	Prism Grey	122, 259	T	
Mohair Sable	232	Python Glory	31, 161, 205	Taos	71, 212
Mohair Slate	173, 232			Terrazzo	140, 234
Monarch cushion	33, 258	Q		Thistle Gold	20, 145, 228
Monarch Fire	20, 26, 32, 157, 198	Quad	96, 231	Thistle Pewter	154, 228
Monarch Smoke	22, 30, 155, 198	Quantum	229	Tidal	30, 50, 205
Mouth	33, 264	Quilt Indigo	85, 212	Tidal Moonlight	53, 205
				Tiger	163, 206
N		R		Tilt Coral	17, 262
Nacre	148, 230	Rai	139, 210	Tilt Green	262
Nazar	84, 236	Rake	179, 244	Tracery	73, 215
Neutra	190, 254	Raymond	259	Triangles White	165, 224
Neutra Mint	254	Reflections Silver	72, 201	Turner	259
		Refraction Bright	127, 219		
O		Refraction Light	126, 219	V	
Oceanic	230	Regalia	31, 89, 196, 227	Vista	253
Orb	264	Repp Stripe	225	Vivienne's Rose Dust	33, 264
Order Grey	249	Ribera	244		
Oriental Birds	31, 153, 217	Rif Light	236	W	
Ottoman Garden	268	Romy	101, 223	Wake	32, 43, 215, 274
Overlay Runner	117, 218			Wave Construct	108, 109, 202
Owl	206	S		Whitmore	259
		Sam's Stone	247	Witton	212
P		Sands	192, 252	Wizlet	187, 249
Pacific	192, 253	Scribble Orb	264	Wooster	185, 249
Paint Stripe	9, 138, 220	Shadow	57, 200		
Pale Swirl	69, 217	Shard	236	Z	
Palermo	97, 223	Silk Ikat Bolster	263	Zap	129, 208
Palette	208	Silk Ikat Extra Large	263	Zig Zag	264
Pallas	68, 234	Silver Rings	204		
Palms	144, 201	Skull Black	258		
Parallax	44, 213	Skull Gold	258		
Parisio	79, 223	Smoke	47, 198		
		Smoke Sunset	198		
		Spectrum	228		
		Split Bright	33, 132, 133, 219		

The Rug Company wishes to thank the following people for their contribution to this book:

On Location

Berlin: Trine Kielland

Dorset: Rags MacGregor, James and Jane Joicey-Cecil

Frankfurt: Sebastian Herkner

LA: Kelly Wearstler and Amy Baker Williams, Adam Hunter

London: Danny Pine and William Smalley (pinzauer.com, williamsmalley.com), Marty Wikstrom, Suzanne Sharp,

Vivienne Westwood, Paul Smith, Allen Snowball and the team at the Paul Smith showroom on Albemarle Street, Beverley Barnett

Malta: Christopher and Suzanne Sharp, Alicia Pfeffeler

Milan: Francesca Semprini

Munich: Uli Tredup, Arthur Duncan

New York: Sandra Nunnerley, Marigay McKee, Stephan Weishaupt and Michael Barr at Avenue Road, Thom Browne

Palm Springs: John McIlwee and Bill Damaschke, Kip Serefin, Tracey Beckmann and Ryan Trowbridge

Paris: Ramdane Touhami and Victoire de Taillac, Joseph Dirand, the team at the Paul Smith showroom on Rue de Granelle

A huge thank you to Bethan Ryder and photographers Ollie Clarke, Bill Batten, The Ingalls, Andrew Montgomery, and Karolina Paczkowska for their contributions.

The Rug Company wishes to thank the following people for allowing us to use their beautiful photography in this book:

Ashli Mizell, Karsansui runner (p20); REMADE Interiors, circular Thistle Gold (p20); Kristi Will Home + Design, custom Monarch Smoke (p22); Turner Pocock, custom Bridge (photographer Alex James) (p22); Haifa Kassem, custom Stingray Red (photographer Ralph Raad) (p23); 1508 London, bespoke design (p24), Alexander McQueen, David Collins Studio (p27), Soho House Berlin (p27), The London Hotel (p27), The Plaza Hotel (p27), The Rittenhouse Hotel, Alexandra Champalimaud (p27)

Portraits:

Brigitte Lacombe: David Rockwell

David Burton: Sarah Burton, courtesy of Alexander McQueen

Gabriel Diaz: Jaime Gili

Mary McCartney: Paul Smith, Vivienne Westwood, Suzanne Sharp

Oleg Covian: Elie Saab

Paul Barbera: Alexandra Champalimaud

Richard Corman: Sandra Nunnerley

Sam McElwee: Sue Timney

Sophie Harris-Taylor: Christopher Kane

We would also like to thank the following people and companies for their generous loans of props:

Carl Hansen and Son www.carlhansen.com

Duncan Campbell at Campbell Rey www.campbell-rey.com

Fiona McDonald www.fionamcdonald.com

Knoll www.knolleurope.com

Les Couilles Du Chien www.lescouillesduchien.com

Pooky www.pooky.com

Talisman www.talismanlondon.com

Our special thanks to everyone at The Rug Company, in particular Alexandra Sokolova, Anderson Escolastico, Caroline Kent, Colton Pabon, Emily Jacobs, Emma Elles-Hill, Emma Geiszler, Fabian Mason, George Barreto, Gio Ortiz, James Seuss, Jamie Kelly, Javier Garcia, Jose Paulino, Kate Judd, Konrad Mical, Laura Vanweydeveld, Lisa McKinney, Lucy Marriott, Lukasz Swatiek, Melanie Turner, Milly Wright, Ollie Clarke, Peter Stadden, Richard Smith, Robert Rodriguez, Roger Gasana, Roman Kramer, Rui Pereira, Sam Turner, Sarah Stagg, Shaun Harper, Steve Mejia, Susanna Joicey-Cecil, Yavira Marte, Ying Ying Guo who all worked tirelessly throughout the production.

COPYRIGHT

All designs contained within this catalogue are subject to copyright © The Rug Company Limited.

All rights reserved. No part of this publication may be reproduced, stored in a retrieval system or transmitted in any form or by any means, electronic, mechanical, photocopying, recording or otherwise.







